

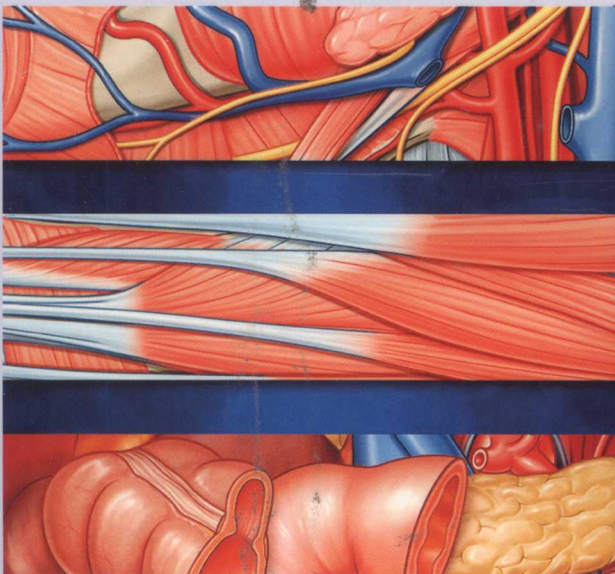
611
D 81

GRAY'S

ANATOMY

FOR STUDENTS

THIRD EDITION



RICHARD L. DRAKE
A. WAYNE VOGL
ADAM W. M. MITCHELL

INTERNATIONAL EDITION

ELSEVIER
CHURCHILL
LIVINGSTONE

611 / 281

GRAY'S

Anatomy for students

Cleveland Clinic Lerner College of Medicine
Case Western Reserve University
Cleveland, Ohio

NOTED
A. Wayne Vogl, PhD, FRCGS, FRCR
Professor of Anatomy and Cell Biology
Department of Cellular and Physiological Sciences
Faculty of Medicine
University of British Columbia
Vancouver, British Columbia, Canada

Adam W. M. Mitchell, MB BS, FRCS, FRCR
Consultant Radiologist
Chelsea and Westminster Hospital
Honorary Senior Lecturer, Imperial College
London, United Kingdom

753630

Universitatea de Stat de
Medicină și Farmacie
«Nicolae Testemițanu»
Biblioteca Științifică Medicală

SL2



Illustrations by
Ansell Horn

Contents

1 The body

What is anatomy? 2

How can gross anatomy be studied? 2

Important anatomical terms 2

Imaging 5

Diagnostic imaging techniques 5

Nuclear medicine imaging 8

Image interpretation 10

Plain radiography 10

Computed tomography 10

Magnetic resonance imaging 11

Nuclear medicine imaging 11

Safety in imaging 11

Body systems 12

Skeletal system 12

Cartilage 12

Bone 13

Joints 18

Skin and fascias 24

Skin 24

Fascia 24

Muscular system 25

Cardiovascular system 27

Lymphatic system 29

Lymphatic vessels 29

Lymph nodes 30

Lymphatic trunks and ducts 30

Nervous system 31

Central nervous system 31

Functional subdivisions of the CNS 32

Somatic part of the nervous system 33

Visceral part of the nervous system 38

Other systems 48

Clinical case 50

Component parts 56

Bones 56

Muscles 57

Vertebral canal 59

Spinal nerves 60

Relationship to other regions 61

Head 61

Thorax, abdomen, and pelvis 62

Limbs 62

Key features 62

Long vertebral column and short spinal cord 62

Intervertebral foramina and spinal nerves 63

Innervation of the back 63

Regional anatomy 64

Skeletal framework 64

Vertebrae 64

Intervertebral foramina 72

Posterior spaces between vertebral arches 73

Joints 77

Joints between vertebrae in the back 77

Ligaments 80

Anterior and posterior longitudinal ligaments 80

Ligamenta flava 80

Supraspinous ligament and ligamentum nuchae 81

Interspinous ligaments 82

Back musculature 84

Superficial group of back muscles 84

Intermediate group of back muscles 90

Deep group of back muscles 92

Suboccipital muscles 97

Spinal cord 99

Vasculature 100

Meninges 103

Arrangement of structures in the vertebral

canal 104

Spinal nerves 106

Surface anatomy 111

Back surface anatomy 111

Absence of lateral curvatures 111

Primary and secondary curvatures in the sagittal plane 112

Useful nonvertebral skeletal landmarks 112

How to identify specific vertebral spinous processes 114

Visualizing the inferior ends of the spinal cord and subarachnoid space 115

Identifying major muscles 116

Clinical cases 118

2 Back

Conceptual overview 53

General description 53

Functions 54

Support 54

Movement 54

Protection of the nervous system 55

3

Thorax

Conceptual overview 123

General description 123

Functions 124

- Breathing 124
- Protection of vital organs 124
- Conduit 124

Component parts 124

- Thoracic wall 124
- Superior thoracic aperture 126
- Inferior thoracic aperture 126
- Diaphragm 127
- Mediastinum 128
- Pleural cavities 128

Relationship to other regions 130

- Neck 130
- Upper limb 130
- Abdomen 130
- Breast 131

Key features 132

- Vertebral level TIV/V 132
- Venous shunts from left to right 132
- Segmental neurovascular supply of thoracic wall 134
- Sympathetic system 136
- Flexible wall and inferior thoracic aperture 136
- Innervation of the diaphragm 138

Regional anatomy 139

Pectoral region 139

- Breast 139
- Muscles of the pectoral region 142

Thoracic wall 143

- Skeletal framework 143
- Intercostal spaces 150

Diaphragm 161

- Arterial supply 162
- Venous drainage 162
- Innervation 162

Movements of the thoracic wall and diaphragm during breathing 162

Pleural cavities 162

- Pleura 163
- Lungs 167

Mediastinum 180

- Middle mediastinum 180
- Superior mediastinum 210
- Posterior mediastinum 222
- Anterior mediastinum 230

Surface anatomy 231

Thorax surface anatomy 231

How to count ribs 231

Surface anatomy of the breast in women 232

Visualizing structures at the TIV/V vertebral level 232

Visualizing structures in the superior mediastinum 234

Visualizing the margins of the heart 235

Where to listen for heart sounds 236

Visualizing the pleural cavities and lungs, pleural recesses, and lung lobes and fissures 236

Where to listen for lung sounds 238

Clinical cases 241

4

Abdomen

Conceptual overview 255

General description 255

Functions 256

- Houses and protects major viscera 256
- Breathing 258
- Changes in intraabdominal pressure 258

Component parts 259

- Wall 259
- Abdominal cavity 260
- Inferior thoracic aperture 262
- Diaphragm 262
- Pelvic inlet 263

Relationship to other regions 263

- Thorax 263
- Pelvis 263
- Lower limb 264

Key features 265

- Arrangement of abdominal viscera in the adult 265
- Skin and muscles of the anterior and lateral abdominal wall and thoracic intercostal nerves 268
- The groin is a weak area in the anterior abdominal wall 269
- Vertebral level LI 271
- The gastrointestinal system and its derivatives are supplied by three major arteries 271
- Venous shunts from left to right 273
- All venous drainage from the gastrointestinal system passes through the liver 274
- Abdominal viscera are supplied by a large prevertebral plexus 276

Regional anatomy 277

Surface topography 277

- Four-quadrant pattern 277
- Nine-region pattern 278

Abdominal wall 280

- Superficial fascia 280
- Anterolateral muscles 282
- Extraperitoneal fascia 288
- Peritoneum 288
- Innervation 289
- Arterial supply and venous drainage 291
- Lymphatic drainage 292

Groin 292

- Inguinal canal 294
- Inguinal hernias 299

Abdominal viscera 303

- Peritoneum 303
- Peritoneal cavity 304
- Organs 310
- Arterial supply 343
- Venous drainage 354
- Lymphatics 358
- Innervation 358

Posterior abdominal region 366

- Posterior abdominal wall 367
- Viscera 373
- Vasculature 387
- Lymphatic system 392
- Nervous system in the posterior abdominal region 394
- Sympathetic trunks and splanchnic nerves 394

Surface anatomy 402

Abdomen surface anatomy 402

- Defining the surface projection of the abdomen 402*
 - How to find the superficial inguinal ring 403*
 - How to determine lumbar vertebral levels 404*
 - Visualizing structures at the L1 vertebral level 405*
 - Visualizing the position of major blood vessels 406*
 - Using abdominal quadrants to locate major viscera 407*
 - Defining surface regions to which pain from the gut is referred 408*
 - Where to find the kidneys 409*
 - Where to find the spleen 409*
- Clinical cases 410**

5 Pelvis and perineum

Conceptual overview 423

- General description 423*
- Functions 423**
 - Contain and support bladder, rectum, anal canal, and reproductive tracts 423
 - Anchor the roots of the external genitalia 425

Component parts 426

- Pelvic inlet 426
- Pelvic walls 426
- Pelvic outlet 428
- Pelvic floor 429
- Pelvic cavity 429
- Perineum 430

Relationship to other regions 432

- Abdomen 432
- Lower limb 433

Key features 434

- The pelvic cavity projects posteriorly 434
- Important structures cross the ureters in the pelvic cavity 435
- The prostate in men and the uterus in women are anterior to the rectum 436
- The perineum is innervated by sacral spinal cord segments 436
- Nerves are related to bone 437
- Parasympathetic innervation from spinal cord levels S2 to S4 controls erection 438
- Muscles and fascia of the pelvic floor and perineum intersect at the perineal body 439
- The course of the urethra is different in men and women 440

Regional anatomy 441

Pelvis 441

- Bones 441
- Joints 446
- Orientation 448
- Differences between men and women 448
- True pelvis 449
- Viscera 460
- Fascia 481
- Peritoneum 481
- Nerves 486
- Blood vessels 495
- Lymphatics 501

Perineum 502

- Borders and ceiling 502
- Ischio-anal fossae and their anterior recesses 504
- Anal triangle 504
- Urogenital triangle 506
- Somatic nerves 513
- Visceral nerves 515
- Blood vessels 516
- Veins 516
- Lymphatics 519

Surface anatomy 520

- Surface anatomy of the pelvis and perineum 520*
- Orientation of the pelvis and perineum in the anatomical position 520*

How to define the margins of the perineum 520
Identification of structures in the anal triangle 522
Identification of structures in the urogenital triangle of women 523
Identification of structures in the urogenital triangle of men 524

Clinical cases 527

6 Lower limb

Conceptual overview 535

General introduction 535

Function 537

Support the body weight 537
Locomotion 537

Component parts 539

Bones and joints 539
Muscles 543

Relationship to other regions 545

Abdomen 545
Pelvis 545
Perineum 545

Key points 545

Innervation is by lumbar and sacral spinal nerves 545
Nerves related to bone 550
Superficial veins 550

Regional anatomy 551

Bony pelvis 551
Proximal femur 554
Hip joint 558
Gateways to the lower limb 562
Nerves 563
Arteries 566
Veins 568
Lymphatics 570
Deep fascia and the saphenous opening 571
Femoral triangle 572

Gluteal region 574

Muscles 574
Nerves 579
Arteries 582
Veins 583
Lymphatics 583

Thigh 583

Bones 584
Muscles 589
Arteries 600
Veins 603

Nerves 603
Knee joint 606
Tibiofibular joint 616
Popliteal fossa 616

Leg 618

Bones 618
Joints 620
Posterior compartment of leg 621
Lateral compartment of leg 628
Anterior compartment of leg 630

Foot 633

Bones 634
Joints 638
Tarsal tunnel, retinacula, and arrangement of major structures at the ankle 646
Arches of the foot 648
Plantar aponeurosis 649
Fibrous sheaths of toes 649
Extensor hoods 650
Intrinsic muscles 650
Arteries 657
Veins 659
Nerves 659

Surface anatomy 663

Lower limb surface anatomy 663

Avoiding the sciatic nerve 663

Finding the femoral artery in the femoral triangle 664

Identifying structures around the knee 664

Visualizing the contents of the popliteal fossa 666

Finding the tarsal tunnel—the gateway to the foot 667

Identifying tendons around the ankle and in the foot 668

Finding the dorsalis pedis artery 669

Approximating the position of the plantar arterial arch 669

Major superficial veins 670

Pulse points 671

Clinical cases 672

7 Upper limb

Conceptual overview 685

General description 685

Functions 686

Positioning the hand 686
The hand as a mechanical tool 689
The hand as a sensory tool 689

Component parts 690

- Bones and joints 690
- Muscles 692

Relationship to other regions 693

- Neck 693
- Back and thoracic wall 694

Key points 695

- Innervation by cervical and upper thoracic nerves 695
- Nerves related to bone 699
- Superficial veins 700
- Orientation of the thumb 701

Regional anatomy 702**Shoulder 702**

- Bones 702
- Joints 705
- Muscles 713

Posterior scapular region 716

- Muscles 717
- Gateways to the posterior scapular region 717
- Nerves 719
- Arteries and veins 719

Axilla 721

- Axillary inlet 723
- Anterior wall 723
- Medial wall 726
- Lateral wall 727
- Posterior wall 728
- Gateways in the posterior wall 730
- Floor 731
- Contents of the axilla 731

Arm 750

- Bones 751
- Muscles 754
- Arteries and veins 756
- Nerves 760

Elbow joint 764**Cubital fossa 768****Forearm 771**

- Bones 773
- Joints 774

Anterior compartment of the forearm 776

- Muscles 776
- Arteries and veins 782
- Nerves 784

Posterior compartment of the forearm 785

- Muscles 785
- Arteries and veins 791
- Nerves 792

Hand 792

- Bones 793
- Joints 795

- Carpal tunnel and structures at the wrist 798
- Palmar aponeurosis 800
- Palmaris brevis 800
- Anatomical snuffbox 800
- Fibrous digital sheaths 801
- Extensor hoods 802
- Muscles 804
- Arteries and veins 810
- Nerves 814

Surface anatomy 819**Upper limb surface anatomy 819****Bony landmarks and muscles of the posterior scapular region 819****Visualizing the axilla and locating contents and related structures 820****Locating the brachial artery in the arm 821****The triceps brachii tendon and position of the radial nerve 822****Cubital fossa (anterior view) 822****Identifying tendons and locating major vessels and nerves in the distal forearm 824****Normal appearance of the hand 825****Position of the flexor retinaculum and the recurrent branch of the median nerve 826****Motor function of the median and ulnar nerves in the hand 826****Visualizing the positions of the superficial and deep palmar arches 827****Pulse points 827****Clinical cases 829****8****Head and neck****Conceptual overview 837****General description 837**

- Head 837
- Neck 839

Functions 841

- Protection 841
- Contains upper parts of respiratory and digestive tracts 841
- Communication 841
- Positioning the head 841
- Connects the upper and lower respiratory and digestive tracts 841

Component parts 842

- Skull 842
- Cervical vertebrae 844

Hyoid bone 845
 Soft palate 846
 Muscles 846

Relationship to other regions 847
 Thorax 847
 Upper limbs 847

Key features 848
 Vertebral levels CIII/IV and CV/VI 848
 Airway in the neck 849
 Cranial nerves 850
 Cervical nerves 851
 Functional separation of the digestive and respiratory passages 851
 Triangles of the neck 854

Regional anatomy 855

Skull 855
 Anterior view 855
 Lateral view 857
 Posterior view 859
 Superior view 860
 Inferior view 860

Cranial cavity 864
 Roof 864
 Floor 865

Meninges 873
 Cranial dura mater 873
 Arachnoid mater 876
 Pia mater 877
 Arrangement of meninges and spaces 877

Brain and its blood supply 879
 Brain 879
 Blood supply 879
 Venous drainage 886

Cranial nerves 894
 Olfactory nerve [I] 896
 Optic nerve [II] 896
 Oculomotor nerve [III] 897
 Trochlear nerve [IV] 897
 Trigeminal nerve [V] 898
 Ophthalmic nerve [V₁] 898
 Maxillary nerve [V₂] 898
 Mandibular nerve [V₃] 898
 Abducent nerve [VI] 898
 Facial nerve [VII] 898
 Vestibulocochlear nerve [VIII] 899
 Glossopharyngeal nerve [IX] 899
 Vagus nerve [X] 900
 Accessory nerve [XI] 900
 Hypoglossal nerve [XII] 900

Face 904
 Muscles 904
 Parotid gland 911
 Innervation 914

Vessels 916

Scalp 922
 Layers 922
 Innervation 924
 Vessels 925
 Lymphatic drainage 926

Orbit 927
 Bony orbit 927
 Eyelids 928
 Lacrimal apparatus 932
 Sensory innervation 933
 Fissures and foramina 934
 Fascial specializations 935
 Muscles 936
 Vessels 941
 Innervation 942
 Eyeball 947

Ear 953
 External ear 954
 Middle ear 958
 Internal ear 965

Temporal and infratemporal fossae 972
 Bony framework 973
 Temporomandibular joints 975
 Masseter muscle 977
 Temporal fossa 978
 Infratemporal fossa 981

Pterygopalatine fossa 992
 Skeletal framework 993
 Gateways 994
 Contents 994

Neck 1000
 Fascia 1000
 Superficial venous drainage 1003
 Anterior triangle of the neck 1006
 Posterior triangle of the neck 1023
 Root of the neck 1030

Pharynx 1040
 Skeletal framework 1041
 Pharyngeal wall 1042
 Fascia 1045
 Gaps in the pharyngeal wall and structures passing through them 1046
 Nasopharynx 1046
 Oropharynx 1048
 Laryngopharynx 1048
 Tonsils 1048
 Vessels 1049
 Nerves 1051

Larynx 1052
 Laryngeal cartilages 1053
 Extrinsic ligaments 1056
 Intrinsic ligaments 1057

Laryngeal joints 1058
 Cavity of the larynx 1059
 Intrinsic muscles 1061
 Function of the larynx 1064
 Vessels 1066
 Nerves 1068

Nasal cavities 1069

Lateral wall 1070
 Regions 1071
 Innervation and blood supply 1072
 Skeletal framework 1072
 External nose 1074
 Paranasal sinuses 1074
 Walls, floor, and roof 1076
 Nares 1080
 Choanae 1081
 Gateways 1082
 Vessels 1082
 Innervation 1085

Oral cavity 1087

Multiple nerves innervate the oral cavity 1088
 Skeletal framework 1088
 Walls: the cheeks 1091
 Floor 1092
 Tongue 1095
 Salivary glands 1102

Roof—palate 1105
 Oral fissure and lips 1113
 Oropharyngeal isthmus 1114
 Teeth and gingivae 1114

Surface anatomy 1120

Head and neck surface anatomy 1120
Anatomical position of the head and major landmarks 1120
Visualizing structures at the CIII/CIV and CVI vertebral levels 1121
How to outline the anterior and posterior triangles of the neck 1122
How to locate the cricothyroid ligament 1123
How to find the thyroid gland 1124
Estimating the position of the middle meningeal artery 1124
Major features of the face 1125
The eye and lacrimal apparatus 1126
External ear 1127
Pulse points 1128

Clinical cases 1129