

011063)
H42

 **USMF**
"NICOLAE TESTEMIȚANU"



Department of Public Health
College of Political, Administrative and Communication Sciences
Babeş-Bolyai University, Cluj-Napoca, Romania



**UNIVERSITATEA
BABEŞ-BOLYAI**



**College of
Public Health**



iCREATE
Increasing Capacity in
Research in Eastern Europe



ABSTRACT BOOK

HEALTH RISK FACTORS AND PREVENTION OF INJURIES AND DISEASES

Material of 3rd International Conference on Non-communicable Diseases „Health risk factors and prevention of injuries and diseases”, funded by NIH USA, Fogarty International Center „iCREATE: Increasing Capacity in Research in Eastern Europe” grant number: 2D43TW007261-11

June 5th – 7th, 2019
Chişinău, Republic of Moldova



Department of Public Health
 College of Political, Administrative and Communication Sciences
 Babeș-Bolyai University, Cluj-Napoca, Romania



**UNIVERSITATEA
 BABEȘ-BOLYAI**



**College of
 Public Health**



iCREATE
 Increasing Capacity in
 Research in Eastern Europe

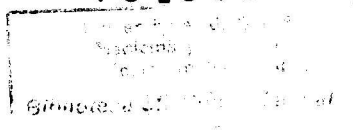
Abstract Book

HEALTH RISK FACTORS AND PREVENTION OF INJURIES AND DISEASES

Material of 3rd International Conference on Non-communicable Diseases
 „Health risk factors and prevention of injuries and diseases”, funded by
 NIH USA, Fogarty International Center „iCREATE: Increasing Capacity
 in Research in Eastern Europe” grant number: 2D43TW007261-11.

June 5th – 7th, 2019
 Chișinău, Republic of Moldova

754989



SL2

CONTENTS

THE GLOBAL BURDEN OF INJURY AND VIOLENCE

RETROSPECTIVE STUDY OF PEDIATRIC TRAUMATIC INJURIES IN CHILDREN HOSPITAL	11
<i>Akhobadze K., Chikhladze, N., Tsiskaridze A.</i>	
HEAD TRAUMA - A MAJOR PUBLIC AND SOCIAL HEALTH ISSUE	12
<i>Baciu A., Robe AD</i>	
ANALYSIS OF THE ACCOUNT OF TRAUMATOLOGICAL PATIENTS OF A CLINIC OF TRAUMATOLOGY-ORTHOPEDECS AND REHABILITATION OF THE HERATSI HOSPITAL COMPLEX № 1 FOR 2018	13
<i>Bakhshetsyan A., Charchyan A., Grigoryan A., Ohanyan A., Harutyunyan D., Mikaelyan F.</i>	
THE ASSESSMENT OF PROFESSIONAL RISK BY WORKPLACE INJURIES DATA ...	14
<i>Bebih V., Gurghis E., Ferdohleb A., Siminovici S., Tapu L.</i>	
THE PSYCHOSOCIAL PREDICTORS OF SELF-INJURIOUS BEHAVIOR IN UKRAINIAN ADOLESCENTS	15
<i>Biron B.</i>	
TRAUMATIC BRAIN INJURIES AMONG CHILDREN - A RETROSPECTIVE STUDY	16
<i>Cazacu-Stratu A. , Cociu S., Mindrigan E., Cebanu S.</i>	
RISK OF TRAUMA - HUGE IMPEDIMENT IN YOUNG ATHLETES PERFORMANCE	17
<i>Cebanu S., Ștefanef Gh.</i>	
RETROSPECTIVE STUDY OF TRAUMATIC INJURIES IN UNIVERSITY HOSPITAL	19
<i>Chkhaberidze N., Chikhladze N., Kereselidze M.</i>	
RETROSPECTIVE STUDY OF TRAUMATIC BRAIN INJURIES AS A RESULT OF ROAD ACCIDENTS	20
<i>Cociu S.</i>	
TRAUMATIC BRAIN INJURIES AMONG ADULTS- A RETROSPECTIVE STUDY ..	21
<i>Cociu S., Cebanu S., Suman A.</i>	
ROAD INJURIES PARTICULARITIES IN THE CHISINAU MUNICIPALITY	22
<i>Cociu S., Cebanu S.</i>	
HEALTH SELF-ASSESSMENT OF INDIVIDUALS IN GEORGIA WHO EXPERIENCED VIOLENCE IN CHILDHOOD	23
<i>Dadiani G.¹, Kazakhashvili N., Chikhladze, N.</i>	

THE USE OF CAR SAFETY DEVICES AMONG THE CHILDREN	25
<i>Garabadgi C. ,Scerbatiuc- Condur C., Rotaru M. , Cazacu-Stratu A.</i>	
REDUCING ROAD INJURY: PUBLIC HEALTH PRIORITY	26
<i>Gogniashvili T.¹, Kazakhashvili N., Lobzhanidze G.</i>	
THE ANALYSIS OF VIOLENCE AND SELF-INFLICTED VIOLENCE IN THE REPUBLIC OF MOLDOVA	27
<i>Gurghis E.</i>	
CHARACTERISTICS OF MAXILLOFACIAL INJURIES: SIMILARITY AND DIFFERENCES	28
<i>Gvazava S.¹, Chikhladze N.Lobzhanidze G.</i>	
ATTITUDE TOWARD ROAD TRAFFIC SAFETY RISKS	29
<i>Gzirishvili T.¹,Giguashvili A., Pitskhelauri N.</i>	
FEATURES OF PEDIATRIC INJURY IN CHISINAU MUNICIPALITY	30
<i>Iunac D.</i>	
EVALUATING PEDIATRIC TBI PATTERN AND GAPS IN CHILDREN HOSPITAL	31
<i>Kereselidze M.¹, Chikhladze N., Lobzhanidze G.3, Tsiskaridze A.</i>	
YOUNG DRIVERS' PERCEPTION OF ROAD TRAFFIC RISKS	32
<i>Khachidze N.¹, Chikhladze, N.</i>	
PATTERN OF INJURIES AT PEDIATRIC CLINIC IN YEREVAN: URBAN VS. RURAL	33
<i>Kotolkyan A., Ghazaryan L.</i>	
THE EVOLUTION OF ACUTE EXOGENOUS NON-PROFESSIONAL POISONING WITH PESTICIDES IN THE REPUBLIC OF MOLDOVA	34
<i>Manceva T., Pinzaru Iu., Stinca K.</i>	
CHARACTERISTICS OF PATIENTS ADMITTED TO TRAUMA DEPARTMENT IN EREBUNI HOSPITAL	35
<i>Melikyan R., Hakobyan A.</i>	
RISK OF INJURIES DUE TO FALLING IN DIFFERENT AGE AND SEX GROUPS ACCORDING YEREVAN STATE MEDICAL UNIVERSITY HERATSI HOSPITAL COMPLEX' DATA	36
<i>Minasyan E., Tsarukyan A., Melikyan R., Arakelyan G., Tadevosyan A</i>	
CHILDREN'S KNOWLEDGE ON ROAD SAFETY IN THE REPUBLIC OF MOLDOVA	37
<i>Pogreban D., Cerempei D., Cazacu-Stratu A., Babalic A.</i>	

THE INCIDENCE OF CHILDREN ROAD TRAFFIC INJURIES IN THE REPUBLIC OF MOLDOVA OVER A TEN YEARS PERIOD	38
<i>Racu MV., Apostol P., Cazacu-Stratu A.</i>	

PATTERN OF INJURIES IN PEDIATRIC HOSPITAL "ST. ASTVATSAMAYR"	39
<i>Tadevosyan A., Tadevosyan N., Arestakesyan L., Petrosyan G.</i>	

THE ATTITUDE OF YOUNG PEOPLE TOWARDS THE RISK AND MOTIVATION OF THE OF SEAT BELT USE	40
<i>Vacula I., Cociu S., Cazacu-Stratu A.</i>	

HEALTH RISK BEHAVIOR AND HEALTH PROMOTION

BUILDING CAPACITY FOR TOBACCO RESEARCH IN ROMANIA	42
<i>Abram Z, Balint I, Ferencz L, Nădășan V</i>	

RISKY BEHAVIOR OF THE YOUTH: THE ROLE OF THE FAMILY	43
<i>Akopashvili T.¹, Kazakhashvili N., Chikhladze N.</i>	

THE DEVELOPMENT OF A PREGNANCY SMOKING CESSATION APP FOR COUPLES IN ROMANIA	44
<i>Blaga OM, Sidor A, Frățilă TF, Brătulescu I, Meghea CI</i>	

USABILITY TESTING OF A MOBILE APP FOR SMOKING CESSATION DURING PREGNANCY	45
<i>Blaga OM, Brătulescu I, Meghea CI, Frățilă TF</i>	

TOBACCO CONTROL AND MHEALTH RESEARCH CAPACITY BUILDING IN ROMANIA	46
<i>Brătulescu IC, Blaga OM, Frățilă TF, Meghea CI</i>	

USE OF E-CIGARETTES AMONG ROMANIAN SMOKER AND EX-SMOKER PREGNANT WOMEN	47
<i>Brătulescu IC, Blaga OM, Meghea CI</i>	

TOBACCO SMOKING HABITS AMONG MOLDAVIAN MEDICAL STUDENTS	48
<i>Ciobanu E., Croitoru C., Șalaru V.</i>	

CHRONIC CONSUMPTION OF ALCOHOL AND ASSOCIATED RISK FACTORS	49
<i>Cotelea E., Lesnic E, Negru A.</i>	

TOBACCO USE AND POLICY IN ROMANIA'S FOSTER CARE SYSTEM	51
<i>Ferencz L., Schmidt L., Nădășan V., Balint I., Abram Z.</i>	

QUALITATIVE FORMATIVE RESEARCH FOR A COUPLE- FOCUSED PREGNANCY SMOKING CESSATION APP	52
<i>Frățilă TF, Blaga OM, Brătulescu I, Meghea CI</i>	

AN EFFICIENT ONLINE STRATEGY FOR ENROLLING ROMANIAN PREGNANT SMOKERS INTO AN MHEALTH CESSATION INTERVENTION	53
<i>Frăţilă TF, Blaga OM, Brătulescu I, Meghea CI</i>	
A MIXED DISSEMINATION STRATEGY FOR ENGAGEMENT OF PREGNANT WOMEN IN A SMOKING CESSATION RANDOMIZED CONTROLLED TRIAL	54
<i>Frăţilă TF, Blaga OM, Meghea CI</i>	
COMMUNICATIONAL MARKETING ELEMENTS IN CHANGING BEHAVIOUR ...	55
<i>Goma L.</i>	
TOBACCO SMOKING AMONG MEDICAL STUDENTS FROM THE REPUBLIC OF MOLDOVA	56
<i>Ignat R.</i>	
IMPROVING THE PUPILS AND PARENTS KNOWLEDGE ABOUT THE PRINCIPLES OF HEALTHY EATING AND PHYSICAL ACTIVITIES	57
<i>Şepilov M, Soroceanu I, Rîmiş C., Silitrari N., Jeliznii G., Crudu E.</i>	
TOBACCO CONTROL LAW AWARENESS AND TOBACCO USE AMONG THE FUTURE DOCTORS IN UNIVERSITY OF MEDICINE (2), YANGON, MYANMAR	58
<i>Thida Aung, Chomar Kaung Myint, Hla Hla Win</i>	
NUTRITIONAL FACTORS ASSOCIATED WITH NON-COMUNICABLE DISEASES	
DIETARY COMPOSITION AND RISK OF OSTEOPOROTIC FRACTURES IN WOMEN FROM THE REPUBLIC OF MOLDOVA	60
<i>Deseatnicova E., Soric G., Boaghe E., Groppa L., Deseatnicova O.</i>	
HYGIENIC ESTIMATION OF THE FOOD ADDITIVES' CONTENT IN DIFFERENT GROUPS OF FOODS	61
<i>Gheorghişenco E., Vetiu S., Chirlici A., Rubanovici V.</i>	
COCA-COLA CONSUMPTION AND ASSOCIATED HEALTH PROBLEMS	62
<i>Mkrtchyan S., Sargsyan A., Khachatryan V., Hovsepyan Sh.</i>	
DIETARY SALT CONSUMPTION AMONG MOLDOVAN ADULTS AND THEIR KNOWLEDGE, ATTITUDES AND BEHAVIOUR	63
<i>Obreja G., Penina O.</i>	
ASSESSMENT OF NUTRITIONAL STATUS OF STUDENTS OF THE NICOLAE TESTEMITANU SUMPh	64
<i>RusuR., Tafuni O.</i>	

NON-COMMUNICABLE DISEASES AND HEALTH RISK FACTORS

AWARENESS OF MOTHERS OF NEWBORN AND INFANT CARE	66
<i>Aslanyan A., Melikyan R., Minasyan E., Arakelyan G., Tsarukyan A.</i>	
PSYCHOSOCIAL FACTORS IN THE GENESIS OF CEREBROVASCULAR ACCIDENTS	67
<i>Bernic V.</i>	
RENAL FUNCTION IN CHRONIC HEART FAILURE PATIENTS	68
<i>Bivol E.</i>	
SURGICAL TREATMENT FOR HIP NECK FRACTURES IN ELDERLY	69
<i>Charchyan A., Grigoryan A., Bakhshetsyan A., Ohanyan A., Harutyanian D., Mikaelyan F.S.</i>	
EARLY INTERVENTION FOR CHILDREN WITH RISK OF CHRONIC DISEASES	70
<i>Curteanu A., Caraus T., Jitarciuc A.</i>	
USAGE OF THE NCCN DISTRESS THERMOMETER AND PROBLEM LIST IN PATIENTS ACCESSING ONE CANCER TREATMENT FACILITY IN MOLDOVA	72
<i>Dascăl MD., Onișor A., Cherecheș RM</i>	
OBESITY AMONG COLLEGE YOUNG STUDENTS AND PREVENTION OF RISK FACTORS	73
<i>Deliu N., Gițu L., Cornei A., Pancu I., Deleu R.</i>	
INTEGRATED CARE FOR PREVENTION, ASSISTANCE AND LONG-TERM SUPPORT FOR PEOPLE WITH NON-COMMUNICABLE DISEASES	74
<i>Dnestrean T., Zahorka M.</i>	
FACTORS INVOLVED IN HYPORESPONSE TO ANTIPLATELET THERAPY	76
<i>Dogot M., Jucov A., Caproș N.</i>	
THE MODE OF DELIVERY AS AN ASSOCIATED FACTOR TO SALUTOGENICALLY-FOCUSED BIRTH OUTCOMES IN ROMANIA	77
<i>Forray A.I.</i>	
DETECTION AND PREVENTION OF MENTAL DISORDERS IN STUDENTS IN GEORGIA	78
<i>Gelashvili S., Kereselidze M., Loria L.</i>	
BURDEN OF NON-COMMUNICABLE DISEASES AND INJURIES IN COUNTRIES OF FORMER SOVIET UNION BLOCK	79
<i>Gulis G.</i>	

THE PECULIARITIES OF TREATMENT OF LIVER GIANT HEMANGIOMAS	80
<i>Harutyunyan H.V.</i>	
PREVENTION OF NON-COMMUNICABLE DISEASE BY REDUCING ENVIRONMENTAL RISK FACTORS	81
<i>Jardan E.</i>	
MANAGEMENT OF ASSESSMENT OF SCREENING RESULTS	82
<i>Jucov A.</i>	
EVALUATION OF THE DYNAMICS OF BLOOD PARAMETERS IN ADOLESCENT GIRLS WITH IRON DEFICIENCY AFTER TREATMENT WITH AND WITHOUT PROPHYLAXIS	83
<i>Lora G., Bivol Gr., Corcimaru I., Deleu R.</i>	
YOUTH AND NON-COMMUNICABLE DISEASES	84
<i>Lupu L.</i>	
MENTAL HEALTH SERVICE USE BY NEWLY DIAGNOSED CANCER PATIENTS IN SERBIA	85
<i>Marcu A, Onișor A, Cherecheș R</i>	
EVALUATION OF THE PROFILATIC MEDICAL EXAMINATION RESULTS OF THE EMERGENCY MEDICINE INSTITUTE MEDICAL STAFF	86
<i>Meșina V.</i>	
ESTIMATION OF THE POPULATION MORBIDITY IN THE ECOSYSTEM OF THE RIVER PRUT	87
<i>Miron I.</i>	
PREVALENCE OF LIFESTYLE-RELATED FACTORS AMONG PATIENTS WITH DIABETES MELLITUS	88
<i>Mkrtchyan S., Khachatryan V., Hovsepyan Sh., Sargsyan A.</i>	
THE MORTALITY ASSESSMENT OF THE MAIN NON-COMMUNICABLE DISEASES AMONG POPULATION OF THE REPUBLIC OF MOLDOVA	89
<i>Palanciuc M., Cociu S., Bagrinovschi A.</i>	
PRIORITY HEALTH PROBLEMS OF THE POPULATION FROM BRICENI DISTRICT ACCORDING TO THE HEALTH PROFILE	90
<i>Șalaru I., Rîmiș C., Jeliznii G., Soroceanu I., Șepilov M., Sîrgoș R.</i>	
THE CHALLENGES OF THE FAMILY DOCTOR'S TEAM IN THE MANAGEMENT OF PATIENTS WITH MULTIMORBIDITY	92
<i>Salaru V.</i>	
MEDICATION ADHERENCE AMONG MULTIMORBID PATIENTS IN PRIMARY CARE IN THE REPUBLIC OF MOLDOVA	93
<i>Scutelnic C., Salaru V.</i>	

CHANGES IN DATA RELATING HYPERTENSION AMONG RURAL POPULATION AFTER COMMUNITY INTERVENTION, YANGON REGION	94
<i>Su-Su-Hlaing, Nway-Nway-Win, Nwe Nwe, Yugo S, Ko-Ko-Zaw</i>	
OBESITY AND ITS COMPLICATIONS	95
<i>Tafuni O.</i>	
OBESITY, ONE OF THE PROBLEMS OF CONTEPORANITY	96
<i>Tafuni O.</i>	
MANAGEMENT OF OBESITY AND OTHER RELATED NON-COMMUNICABLE DISEASES	97
<i>Tarcea M., Nemes L., Cinpeanu C., Ruta F., Rus V., Salcudean M.</i>	
IMPROVING HEALTH AND HEALTH CAPITAL THROUGH AN EFFECTIVE PRIMARY CARE SYSTEM: EVIDENCE FROM GEORGIA	98
<i>Tengiz V.</i>	
EPIDEMIOLOGY OF OBESITY IN ADULT POPULATION FROM THE REPUBLIC OF MOLDOVA	99
<i>Tomacinschii A.</i>	
CAUSES OF DISAGREEMENT REGARDING ILLNESSES BETWEEN PATENTS WITH MULTIMORBIDITY AND FAMILY PHYSICIAN	100
<i>Volosciuc V., Șalaru V.</i>	
DIABETES MELLITUS – CHALLENGE IN ACQUIRING TUBERCULOSIS AND TREATMENT OUTCOME	101
<i>Lesnic E., Malic A., Tafuni O., Niguleanu A., Osipov T.</i>	
COPD AS A COMPONENT OF NONCOMMUNICABLE DISEASES AND MORTALITY RELATED WITH IT	102
<i>Condratski D., Pisarenco S.</i>	
MORTALITY FROM NONCOMMUNICABLE DISEASES IN REPUBLIC OF MOLDOVA IN PRESENT AND FUTURE	103
<i>Pisarenco N., Condratski D., Pisarenco S.</i>	
RAISING WARINESS RELATED TO ENVIRONMENTAL HEALTH RISK FACTORS	
IMPACTS OF ASBESTOS CONTAMINATION IN BRONI AND SURROUNDINGS (ITALY): THE “SIAMO” PROJECT	105
<i>Borrelli P, Gnesi M, Oddone E, Villani S, Cadum E.</i>	

IMPACT OF INDOOR AIR QUALITY IN SCHOOLS AND RELATED HEALTH EFFECTS	106
<i>Cazacu-Stratu A., Friptuleac Gr., Balan G.</i>	
RADON GAS IN HOMES MEASURED TO MINIMIZE CANCER RISK	107
<i>Coretchi L., Bahnarel I., Căpăfina A.</i>	
ASSESSMENT OF THE HEALTH STATUS OF URBAN POPULATION IN RELATION TO THE AMBIENT AIR QUALITY	108
<i>Friptuleac Gr., Lupu M.</i>	
IMPACT OF ARARAT CEMENT AND ZANGEZUR COPPER AND MOLYBDENUM FACTORIES EMISSIONS ON POPULATION HEALTH	109
<i>Gevorgyan N.V, Petrosyan G.V, Hakobyan A.E, Aslanyan A.H.</i>	
METHODS OF STUDYING THE MEDICO-BIOLOGICAL EFFECTS OF EXPOSURE TO IONIZING RADIATION	111
<i>Gîncu M.</i>	
INTERNATIONAL SUPPORT AND TRAINING ON ASBESTOS NETWORK TOOL FOR EUROPE (ISTANTE)	112
<i>Gnesi M, Popa I, Assis F, Cebanu S, Felszeghi S, Ferrante M, Gesuita R, Larese Filon F, Martinson Ž, Mates D, Matranga D, Nena E, Schlünssen V, Silajdžić I, Turner M, Vivani L, Villani, S.</i>	
HEALTH IMPACT OF THE EMISSIONS FROM A REFINERY: CASE-CONTROL STUDY ON THE ADULT POPULATION LIVING IN TWO MUNICIPALITIES IN LOMELLINA, ITALY	113
<i>Gnesi M., Monti MC., Zambianchi R., Montomoli C., Villani S.</i>	
PSYCHOSOCIAL ENVIRONMENT AT WORK, OR WHY WE SHOULD EVALUATE IT: VILNIUS (LITHUANIA) KINDERGARTEN STUDY	114
<i>Jankovskaja D., Stanislavoviene J.</i>	
STRESS LEVEL AND COPING STRATEGIES APPLIED IN OCCUPATIONAL STRESS AT TEACHERS	115
<i>Pogreban D., Croitoru C., Cheptea D.</i>	
HEALTH RISK ASSESSMENT RELATED TO ENVIRONMENTAL CHEMICAL POLLUTION	116
<i>Sircu R., Turcanu Gh., Opopol N., Pinzaru Iu.</i>	
EXPOSURE TO CHEMICALS AND HELTH RISK ASSESSMENT OF FARMERS ...	117
<i>Zavtoni M., Sircu R.</i>	
EVALUATION OF FOOD HABITS FOR A GROUP OF ADOLESCENTS FROM THE "ANGHEL SALIGNY" TECHNICAL COLLEGE IN BACAU	119
<i>Albu A., Nechita A.I., Chipser C., Dima F.</i>	