

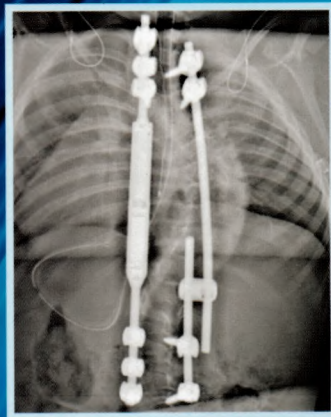
John Anthony **Herring**, MD



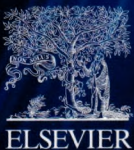
Enhanced
DIGITAL
VERSION
Included

Tachdjian's **Pediatric Orthopaedics**

From the Texas Scottish Rite Hospital for Children



Sixth Edition



Volume One

Volume One

Tachdjian's
**Pediatric
Orthopaedics**

From the Texas Scottish Rite Hospital for Children

John A. Herring, MD

Chief of Staff Emeritus
Department of Orthopaedic Surgery
Texas Scottish Rite Hospital for Children
Professor
Department of Orthopaedic Surgery
University of Texas Southwestern Medical Center
Dallas, Texas

Sixth Edition



ELSEVIER

CONTENTS

Volume One

Section I

DISCIPLINES

1 Growth and Development	3	4 The Orthopaedic Examination: Clinical Application	51
Normal Growth and Development	3	Screening Examinations	51
Disorders of Normal Growth and Development	3	Hip Examination	51
Malformations	3	Other Newborn Screening Examinations	52
Deformations	5	Scoliosis Examination	52
Disruptions	5	General Childhood Screening Examination	52
Dysplasias	5	The Focused Examination	53
Evolution of Proportionate Body Size	5	Intoeing	53
Physical Growth	5	Flatfoot	54
Head Circumference	5	Leg Length Discrepancy	55
Height and Weight	6	Spinal Deformity	57
Epiphyseal Growth and Closure	6	The Art of Examining the Pediatric Patient	58
Tanner Stages of Development	6	5 Gait Analysis	61
Developmental Milestones	6	Phases of Gait	61
Gross Motor Skills	6	Stance Phase	61
Fine Motor Skills	6	Swing Phase	61
Personal, Social, and Verbal Skills	19	Time Spent in Each Phase	61
2 The Orthopaedic History	22	Temporal (Cadence) Parameters	61
Chief Complaint	22	Neurologic Control of Gait	62
History of Present Illness	22	Function of Gait	62
Family History	22	Gait Energy	62
Birth History	22	Kinematics	63
Prenatal History	22	Sagittal Plane	63
Natal History	23	Coronal Plane	63
Neonatal History	23	Transverse Plane	64
Growth and Development: Key Questions	23	Muscle Activity	64
3 The Orthopaedic Examination: A Comprehensive Overview	24	Types of Muscle Contraction	65
Recognizing Deformities	24	Muscle Activity During Stance and Swing Phases	66
Angular Deformity	24	Gait Analysis Laboratories	67
Range of Motion	24	6 The Limping Child	69
The Shoulder	26	Abnormal Gait Patterns in Children	69
The Elbow	28	Antalgic Gait	69
The Forearm	30	Trendelenburg Gait	69
The Cervical Spine	30	Proximal Muscle Weakness Gait	70
Motion of the Spine	30	Spastic Gait	70
The Hip	31	Short-Limb Gait	70
The Knee	36	Special Considerations Based on Age Group	70
The Ankle	36	Toddler (Ages 1 to 3 Years)	70
The Foot	38	Child (Ages 4 to 10 Years)	72
Muscle Strength	38	Adolescent (Ages 11 to 15 Years)	72
Neurologic Assessment	39	7 Back Pain	73
Developmental Reflexes	39	History	73
		Nature of the Pain	73
		Constitutional Symptoms	73

<i>Aggravating and Alleviating Factors</i>	73
<i>Age-Related Conditions</i>	74
<i>Assessment of General Symptoms</i>	74
Physical Examination	74
<i>General Inspection</i>	74
<i>Assessment of the Spine</i>	74
<i>Neurologic Assessment</i>	75
<i>General Physical Assessment</i>	75
Diagnostic Studies	75
<i>Radiography</i>	75
<i>Bone Scan</i>	76
<i>Computed Tomography</i>	76
<i>Single-Photon Emission Computed Tomography</i>	76
<i>Magnetic Resonance Imaging</i>	76
<i>Laboratory Tests</i>	76
Differential Diagnosis	77
<i>Mechanical Disorders</i>	77
<i>Developmental Disorders</i>	79
<i>Infectious and Inflammatory Conditions</i>	81
<i>Neoplasms</i>	83
<i>Malignancies</i>	84
<i>Intraabdominal and Intrathoracic Causes of Back Pain</i>	86

Section II

ANATOMIC DISORDERS

8 Disorders of the Neck	89
Overview	89
Developmental Anatomy	89
<i>Atlas</i>	89
<i>Axis</i>	89
<i>Subaxial Cervical Spine</i>	90
Unique Characteristics	90
Cervical Deformity: Torticollis	91
<i>Deformity Without Pain—Congenital Torticollis</i>	91
<i>Deformity With Pain</i>	108
<i>Inflammatory and Septic Causes</i>	114
Cervical Deformity: Kyphosis	116
<i>Congenital or Developmental Kyphosis</i>	117
<i>Acquired Postlaminectomy Kyphosis</i>	123
Cervical Hyperlordosis	125
Cervical Instability	127
<i>Os Odontoideum</i>	127
<i>Down Syndrome</i>	127
<i>Atlantooccipital Anomalies</i>	128
<i>Odontoid Anomalies and Ligamentous Instability in Skeletal Dysplasia</i>	128
<i>Nontraumatic Atlantooccipital Instability</i>	129
<i>Subaxial Instability</i>	129
9 Scoliosis	132
Definition	132
Classification of Scoliotic Curves	132

Idiopathic Scoliosis	132
Adolescent Idiopathic Scoliosis	132
<i>Prevalence</i>	132
<i>Natural History</i>	132
<i>Scoliosis Screening</i>	135
<i>Etiology</i>	137
<i>Pathophysiology</i>	138
<i>Clinical Features</i>	139
<i>Radiographic Findings</i>	143
<i>Treatment</i>	146
<i>Curve Patterns</i>	151
Posterior Spinal Instrumentation	164
<i>Development of Instrumentation for Scoliosis Surgery</i>	164
<i>Other Methods of Assessing Screw Placement</i>	168
<i>Clinical Outcome</i>	168
<i>Posterior Mobilization Techniques</i>	168
Anterior Spinal Instrumentation	173
<i>Anterior Approach to Thoracolumbar and Lumbar Curves</i>	173
<i>Solid-Rod Anterior Instrumentation</i>	175
<i>Anterior Instrumentation for Thoracic Deformity</i>	175
Juvenile Idiopathic Scoliosis	176
<i>Predicting Curve Progression</i>	176
<i>Neural Axis Abnormalities</i>	176
Congenital Spinal Deformities	176
<i>Etiology</i>	176
<i>Associated Abnormalities</i>	177
<i>Congenital Scoliosis</i>	178
<i>Congenital Kyphosis</i>	185
<i>Natural History</i>	186
<i>Clinical Features</i>	187
<i>Radiographic Findings</i>	188
<i>Treatment</i>	188
<i>Segmental Spinal Dysgenesis, Congenital Vertebral Displacement, and Congenital Dislocation of the Spine</i>	190
Early-Onset Scoliosis	191
<i>Effect on Respiratory Function</i>	193
<i>Treatment</i>	197
<i>Operative Treatment</i>	202
<i>Results—Magnetic Controlled Growing Rods</i>	212
<i>Hybrid Technique</i>	212
<i>Expansion Thoracoplasty With VEPTR</i>	214
<i>Growth Guidance Constructs</i>	218
<i>Summary</i>	219
Other Causes of Scoliosis	219
<i>Neurofibromatosis</i>	219
<i>Marfan Syndrome</i>	224
<i>Congenital Heart Disease</i>	225
<i>Thoracotomy</i>	226
<i>Laminectomy</i>	227
<i>Irradiation</i>	228
<i>Hysterical Scoliosis</i>	228

10 Kyphosis	253	Principles of Reconstruction	329
Posture	253	Architecture and Hand Physiology	329
Causes of Hyperkyphosis	253	Nerve Function: Sensibility and Power	330
Postural Kyphosis	253	Architecture of the Hand	331
Scheuermann Kyphosis	253	Planning Reconstruction	331
Determining Fusion Levels	257	Evaluation of the Child for Reconstruction	332
Summary	261	Congenital Anomalies	334
Progressive Noninfectious Anterior Fusion	261	Classification	334
Postlaminectomy or Postirradiation Kyphosis	261	Diagnosing Associated Anomalies	334
Postlaminectomy Kyphosis	261	Radial Longitudinal Deficiency	336
Postirradiation Kyphosis	262	Congenital High Scapula (Sprengel Deformity)	343
Miscellaneous Causes of Kyphosis	267	Pseudarthrosis of the Clavicle	344
Achondroplasia	267	Ulnar Longitudinal Deficiency	344
Pseudoachondroplasia	267	Phocomelia (Proximal Longitudinal Dysplasias)	346
Spondyloepiphyseal Dysplasia/ Mucopolysaccharidosis	267	Synostosis of the Radius and Ulna	347
Marfan Syndrome	267	Arthrogryposis in the Upper Limb	349
11 Other Anatomic Disorders of the Spine	270	Madelung Deformity	354
Spondylolisthesis	270	Polydactyly	358
Classification	270	Syndactyly	368
Pathoanatomy	270	Thumb Abnormalities	378
Clinical Features	274	Macrodactyly	380
Radiographic Findings	274	Congenital Band Syndrome	384
Prognosis and Natural History	279	Apert Syndrome	390
Treatment	280	Juvenile Arthritis and Other Noninfectious Inflammatory Conditions	392
Lumbar Disk Herniation	292	General Principles	393
Incidence	292	Wrist Involvement	393
Causes	292	Hand Involvement	397
Clinical Features	293	Treatment of Digital Involvement	398
Radiographic Findings	294	Other Noninfectious Inflammatory Conditions	399
Treatment	294	Infections	400
Slipped Vertebral Apophysis	296	Paronychia	401
Clinical Features	296	Felon	401
Radiographic Findings	296	Herpetic Whitlow	402
Treatment	296	Pyogenic Tenosynovitis	402
Transitional Vertebra (Bertolotti) Syndrome	297	Deep-Space Infections	403
12 Disorders of the Upper Extremity	300	Bite Wounds	403
Introduction	300	Septic Arthritis	403
Embryology	300	Osteomyelitis	403
History and Examination	301	Other Infections	403
Timing of Surgical Procedures	305	Conditions Mimicking Infection	404
Principles of Dressings and Splinting	307	Neonatal Brachial Plexus Palsy	404
Dressings	307	Etiology	404
Hand Therapy	310	Classification	404
Principles of Acute Care	323	Clinical Features	405
General Principles	323	Prognosis and Natural History	405
Tendon Injury	326	Differential Diagnosis	405
Nerve Injury	327	Treatment	405
Skin Injury	327	Residual Deformities	406
Bone Injury	327	Management of Residual Deformities	407
Vascular Injury	328	Tumors of the Upper Limb	410
		Nonneoplastic Masses	410
		Neoplasms	411

Microsurgery	413		
<i>Replantation (Attachment of Severed Parts)</i>	413	<i>Osteotomies That Augment the</i>	
<i>Revascularization</i>	413	<i>Acetabulum</i>	469
<i>Free Tissue Transfer</i>	413	Teratologic Dislocation of the Hip	471
<i>Free Motorized Muscle Transfer</i>	414	14 Legg-Calvé-Perthes Disease	527
<i>Free Toe Transfer</i>	415	Definition	527
<i>Free Vascularized Bone Transfers</i>	415	Incidence	527
<i>Free Joint Transfer for Radial Clubhand</i>	417	History	527
		Etiology	528
13 Developmental Dysplasia of the Hip	422	Pathology and Pathophysiology	534
Definition	422	<i>Hip Synovitis</i>	534
Incidence	422	<i>Histopathology of the Epiphysis</i>	535
Etiology	423	<i>Findings Suggestive of Double</i>	
<i>Ligamentous Laxity</i>	423	<i>Infarction of the Epiphysis</i>	536
<i>Prenatal Positioning</i>	424	<i>Pathogenesis of Femoral Head Deformity</i>	537
<i>Postnatal Positioning</i>	424	<i>Histopathology of the Epiphyseal and the</i>	
<i>Racial Predilection</i>	425	<i>Physeal Cartilage</i>	538
Associated Conditions	425	<i>Metaphyseal Changes</i>	540
Pathophysiology	425	Clinical Features	540
<i>Normal Hip Development</i>	425	<i>Symptoms</i>	540
<i>Hip Development With Developmental</i>		<i>Signs</i>	541
<i>Dysplasia of the Hip</i>	427	<i>Clinical Course</i>	542
Natural History	430	<i>Natural History of the Disease</i>	542
<i>Neonatal Hip Instability</i>	430	Radiographic Findings	543
<i>Dysplasia, Subluxation, and Dislocation</i>		<i>Radiographic Staging of Disease Evolution</i>	543
<i>After the Neonatal Period</i>	430	<i>Other Radiographic Findings</i>	547
Clinical Features	431	<i>Scintigraphy</i>	553
<i>Neonate</i>	431	<i>Arthrography</i>	553
<i>Infant</i>	432	<i>Ultrasonography</i>	554
<i>Walking Child</i>	434	<i>Computed Tomography</i>	554
Radiographic Findings	434	Radiographic Classification Systems for	
<i>Ultrasonography</i>	434	Prognostication	554
<i>Radiography</i>	437	<i>Catterall Classification</i>	554
<i>Arthrography</i>	440	<i>Salter-Thompson Classification</i>	554
<i>Magnetic Resonance Imaging</i>	442	<i>Lateral Pillar Classification</i>	554
Screening Criteria	442	<i>Classification of End Results</i>	557
Treatment	442	Quantitative Measures of Femoral Head	
<i>Treatment of the Neonate</i>	442	Sphericity and Congruency	561
<i>Treatment of the Young Child</i>		<i>Prognostic Risk Factors</i>	561
<i>(2 to 6 Months Old)</i>	444	Differential Diagnosis	561
<i>Treatment of the Child</i>		Treatment	563
<i>(6 Months to 2 Years Old)</i>	446	<i>Concept of Containment Treatment</i>	563
<i>Treatment of the Older Child (2 Years Old</i>		<i>Evaluation of the Concept of Containment</i>	
<i>and Older)</i>	453	<i>Treatment</i>	563
Complications and Pitfalls	453	<i>Symptomatic Therapy</i>	564
<i>Avascular Necrosis</i>	453	<i>Nonsurgical Containment Using Orthotic</i>	
<i>Inadequate Reduction and Redislocation</i>	458	<i>Devices</i>	564
<i>Residual Acetabular Dysplasia</i>	458	<i>Surgical Containment</i>	565
<i>Acetabular Dysplasia Presenting Late</i>	459	<i>Other Surgical Treatments</i>	569
Reconstructive Procedures for Dysplasia	461	<i>Our Current Treatment Approach</i>	
<i>Simple Pelvic Osteotomies That Reposition</i>		<i>During the Early Stages of the Disease</i>	570
<i>the Acetabulum</i>	461	<i>Treatment of Healed Femoral Heads With</i>	
<i>Complex Osteotomies That Reposition the</i>		<i>Incongruity and Impingement</i>	572
<i>Acetabulum</i>	464	<i>Treatment of Osteochondrotic Lesions</i>	
<i>Spherical Acetabular Osteotomy</i>	468	<i>in the Femoral Head</i>	578
		Long-Term Prognosis	579

15 Slipped Capital Femoral Epiphysis	581	18 Disorders of the Leg	630
Incidence and Epidemiology	581	Disorders of the Knee Presenting in	
Classification	582	Infancy	630
<i>Functional Classification</i>	582	<i>Congenital Hyperextension and</i>	
<i>Classification Based on Onset of</i>		<i>Dislocation of the Knee</i>	630
Symptoms	582	<i>Congenital Dislocation of the Patella</i>	635
<i>Morphologic Classification</i>	582	Disorders of the Legs Presenting	
Etiology	583	After Infancy	636
Mechanical Factors	583	<i>Genu Varum (Bowlegs)</i>	636
Endocrine Factors	584	<i>Genu Valgum (Knock-Knees)</i>	656
Pathology	585	<i>Tibial Torsion</i>	663
Clinical Features	586	<i>Bowing of the Tibia</i>	664
<i>Stable, Chronic Slipped Capital Femoral</i>		<i>Congenital Pseudarthrosis of the Fibula</i>	679
<i>Epiphysis</i>	586	19 Disorders of the Foot	682
<i>Unstable Acute or Acute-on-Chronic</i>		Introduction	682
<i>Slipped Capital Femoral Epiphysis</i>	586	Normal Variations	682
<i>Chondrolysis Complicating Slipped</i>		<i>Os Trigonum</i>	682
<i>Capital Femoral Epiphysis</i>	587	<i>Accessory Navicular</i>	686
Radiographic Findings	587	Osteochondroses	689
Plain Radiography	587	<i>Köhler Disease</i>	689
Computed Tomography	588	<i>Freiberg Infraction</i>	690
Technetium-99 Bone Scan	588	Congenital Deformities	691
Ultrasonography	588	Postural Deformities	691
Magnetic Resonance Imaging	588	<i>Talipes Calcaneovalgus</i>	694
Treatment	589	<i>Flexible Flatfoot (Pes Planovalgus)</i>	696
Initial Management	589	<i>Skewfoot</i>	706
Definitive Treatment	589	<i>Congenital Talipes Equinovarus (Clubfoot)</i>	706
Residual Deformity After Primary		<i>Vertical Talus</i>	741
Treatment	595	<i>Tarsal Coalition</i>	747
Prophylactic Treatment of the		<i>Cleft Foot</i>	754
Contralateral Hip	598	Neurogenic Abnormalities	755
Complications	598	<i>Cavus Foot</i>	755
Avascular Necrosis	599	Toe Deformities	768
Chondrolysis	603	<i>Hallux Valgus</i>	768
Prognosis	604	<i>Hallux Valgus Interphalangeus</i>	775
Remodeling After Epiphyseal Stabilization	604	<i>Hallux Varus</i>	775
Summary of Natural History and		<i>Hallux Rigidus</i>	777
Prognosis	605	<i>Polydactyly</i>	778
16 Congenital Coxa Vara	616	<i>Syndactyly</i>	779
Incidence	616	<i>Macrodactyly</i>	780
Etiology	616	<i>Varus Fifth Toe</i>	782
Clinical Features	616	<i>Curly Toe</i>	783
Radiographic Findings	617	<i>Hammer Toe</i>	784
Pathophysiology	618	<i>Mallet Toe</i>	785
Biomechanics	619	<i>Longitudinal Epiphyseal Bracket</i>	785
Treatment	619	<i>Hair Tourniquet Syndrome</i>	785
17 Disorders of the Femur	625	<i>Subungual Exostosis</i>	786
Femoral Anteversion	625	<i>Glomus Tumor</i>	786
Definition	625	20 Limb Length Discrepancy	806
Clinical Features	625	Leg Length Inequality	806
Differential Diagnosis	625	Etiology and Associated Conditions	806
Prognosis and Natural History	625	Impact of Inequality	807
Association With Other Conditions	626	Assessment of Inequality	809
Measurement	627	Prediction of Leg Length Inequality	
Treatment	627	<i>in the Skeletally Immature Child</i>	812
Snapping Iliotibial Band Syndrome	628	Treatment	823

Angular Deformity	850		
<i>Etiology</i>	850		
<i>Normal Lower Extremity Alignment</i>	850		
<i>Assessment of Deformity</i>	850		
<i>Principles of Deformity Correction</i>	853		
<i>Surgical Options for Deformity Correction</i>	853		
Section III			
COMMON ORTHOPAEDIC DISORDERS			
21 Limb Deficiencies	873		
Proximal-Distal Axis	873		
Anterior-Posterior Axis	873		
Dorso-Ventral Axis	873		
<i>Genetic Regulation of Limb Development</i>	874		
Classifying Limb Deficiencies	875		
<i>Frantz and O'Rahilly Classification System</i>	875		
<i>International Society for Orthotics/International Society for Prosthetics and Orthotics International Classification System</i>	876		
General Treatment Concepts	877		
<i>Timing of Treatment</i>	877		
<i>Social Factors</i>	878		
<i>Long-Term Planning</i>	878		
Congenital Absence of Limbs	880		
<i>Timing of Limb Malformation and Deformation</i>	880		
<i>Etiology of Limb Absence</i>	880		
<i>Heritable Limb Deficiencies and Associated Anomalies</i>	881		
<i>Hypothesis of Subclavian Artery Supply Disruption Sequence</i>	882		
<i>Psychosocial Issues</i>	883		
Congenital Lower Limb Deficiencies	884		
<i>Proximal Focal Femoral Deficiency</i>	884		
<i>Fibular Deficiency</i>	894		
<i>Tibial Deficiency</i>	900		
<i>Foot Deficiency</i>	903		
Congenital Upper Limb Deficiencies	903		
<i>Transverse Deficiencies</i>	903		
<i>Radial Deficiency</i>	907		
<i>Ulnar Deficiency</i>	909		
Acquired Limb Absences	910		
<i>Primary Causes and Treatment Principles</i>	910		
<i>Surgical Amputations</i>	914		
<i>Complications</i>	916		
<i>Psychosocial Aspects</i>	918		
Multilimb Deficiencies	918		
<i>Bilateral Upper Limb Absence</i>	918		
<i>Bilateral Lower Limb Absence</i>	919		
<i>Bilateral Upper and Lower Limb Absence (Quadrimeic Limb Deficiency)</i>	919		
<i>One Upper-Limb and One Lower-Limb Absence</i>	920		
			<i>Bilateral Upper-Limb and One Lower-Limb Absence</i> 920
			Prosthetic Management 920
			<i>Concepts of Prosthetic Management</i> 920
			<i>Prosthetic Management of Specific Deficiencies</i> 923
		22 Arthritis	928
		Joints	928
		<i>General Considerations</i>	928
		<i>Joint Fluid Analysis</i>	928
		Juvenile Idiopathic Arthritis (Formerly Juvenile Rheumatoid Arthritis)	930
		<i>Definition and Classification</i>	930
		<i>Incidence and Prevalence</i>	930
		<i>Demographics</i>	930
		<i>Etiology</i>	930
		<i>Pathology</i>	932
		<i>Clinical Features</i>	932
		<i>Laboratory Evaluation</i>	935
		<i>Radiographic Evaluation</i>	935
		<i>Treatment</i>	936
		Enthesitis-Related Arthritis and Spondyloarthropathies	938
		<i>Juvenile Ankylosing Spondylitis</i>	938
		<i>Reactive Arthritis</i>	939
		<i>Psoriatic Arthritis</i>	939
		Acute Transient Synovitis of the Hip	940
		<i>Etiology</i>	940
		<i>Clinical Features</i>	941
		<i>Diagnostic Studies</i>	941
		<i>Differential Diagnosis</i>	941
		<i>Clinical Course</i>	941
		<i>Treatment</i>	942
		<i>Natural History</i>	942
		Neuropathic Arthropathies	942
		<i>Clinicopathologic Features</i>	942
		<i>Radiographic Findings</i>	942
		<i>Treatment</i>	943
		Tuberculous Arthritis	943
		Tuberculosis of the Spine	943
		Gonococcal Arthritis	943
		23 Infections of the Musculoskeletal System	945
		Overview	945
		Radiology	946
		<i>Plain Radiography</i>	946
		<i>Ultrasonography</i>	946
		<i>Fluoroscopy</i>	947
		<i>Nuclear Imaging</i>	948
		<i>Computed Tomography</i>	948
		<i>Magnetic Resonance Imaging</i>	949
		Laboratory Studies	953
		<i>Complete Blood Count</i>	953
		<i>Erythrocyte Sedimentation Rate</i>	954
		<i>C-Reactive Protein</i>	954
		<i>Interleukin-6</i>	954

Local Tissue and Blood Cultures			
(Microbiology)	955		
Staphylococcus aureus	955	Etiology	1003
Streptococcus pyogenes	956	Pathology	1005
Kingella kingae	956	Clinical Features	1005
Streptococcus pneumoniae	957	Radiographic Findings	1005
Neisseria meningitidis	958	Differential Diagnosis	1005
Neisseria gonorrhoeae	958	Treatment	1005
Borrelia burgdorferi	958	Aneurysmal Bone Cyst	1008
Mycobacterium tuberculosis	959	Incidence	1008
<i>Nontuberculous Mycobacteria</i>	959	Etiology	1008
Treponema pallidum	959	Pathology	1008
Brucella melitensis	959	Clinical Features	1009
Bartonella henselae	960	Radiographic Findings	1009
<i>Fungal Organisms</i>	961	Treatment	1010
Coccidioides immitis	961	Fibrous Dysplasia	1013
Blastomyces dermatitidis	962	Incidence	1013
Actinomyces israelii	962	Classification	1013
Sporothrix schenckii	962	Etiology	1013
Disease Manifestations	963	Pathology	1013
Osteomyelitis	963	Clinical Features	1013
Septic Arthritis	975	Radiographic Findings	1014
Tuberculous Arthritis	978	Differential Diagnosis	1015
Tuberculosis of the Spine	982	Treatment	1015
Gonococcal Arthritis	985	Osteofibrous Dysplasia of the	
Pyomyositis	986	Tibia and Fibula (Campanacci	
Other Soft Tissue Infections of		Disease)	1016
Orthopaedic Significance	988	Incidence	1016
Infection in Challenging Locations	990	Etiology	1017
Spine	990	Pathology	1017
Pelvis	992	Clinical Features	1017
Foot	994	Radiographic Findings	1017
Systemic Diseases Associated With		Differential Diagnosis	1017
Infection	994	Treatment	1017
Sickle Cell Disease	994	Solitary Osteochondroma	1019
Chronic Granulomatous Disease	996	Incidence	1019
Human Immunodeficiency Virus	996	Etiology	1019
		Pathology	1019
		Clinical Features	1019
		Radiographic Findings	1019
		Differential Diagnosis	1020
		Sarcomatous Change	1020
		Treatment	1020
		Hereditary Multiple Exostoses	1021
		Incidence	1021
		Etiology	1021
		Pathology	1022
		Clinical Features	1022
		Radiographic Findings	1025
		Differential Diagnosis	1025
		Sarcomatous Change	1025
		Treatment	1025
		Solitary Enchondroma	1026
		Incidence	1026
		Pathology	1026
		Clinical Features	1027
		Radiographic Findings	1027
		Differential Diagnosis	1027
		Treatment	1027
Volume Two			
Section IV			
MUSCULOSKELETAL TUMORS			
24 General Principles of Tumor Management	999		
Tumors of the Musculoskeletal System	999		
Classification	999		
Clinical Features	999		
Radiographic Findings	1000		
Staging Studies	1001		
Biopsy	1001		
Treatment	1002		
25 Benign Musculoskeletal Tumors	1003		
Simple Bone Cysts (Solitary Bone Cyst, Unicameral Bone Cyst)	1003		
Incidence	1003		

Multiple Enchondromatosis (Ollier Disease) and Maffucci Syndrome	1028	<i>Etiology</i>	1042
<i>Pathology</i>	1028	<i>Pathology</i>	1042
<i>Clinical Features</i>	1028	<i>Clinical Features</i>	1042
<i>Radiographic Findings</i>	1028	<i>Radiographic Findings</i>	1042
<i>Sarcomatous Change</i>	1028	<i>Differential Diagnosis</i>	1042
<i>Treatment</i>	1028	<i>Natural History</i>	1042
Chondroblastoma	1029	<i>Treatment</i>	1043
<i>Incidence</i>	1029	Primary Synovial Chondromatosis	1043
<i>Etiology</i>	1029	<i>Incidence</i>	1043
<i>Pathology</i>	1030	<i>Etiology</i>	1043
<i>Clinical Features</i>	1030	<i>Pathology</i>	1043
<i>Radiographic Findings</i>	1031	<i>Clinical Features</i>	1043
<i>Differential Diagnosis</i>	1032	<i>Radiographic Findings</i>	1044
<i>Treatment</i>	1032	<i>Treatment</i>	1044
Chondromyxoid Fibroma	1032	Pigmented Villonodular Synovitis and Giant Cell Tumor of the Tendon Sheath	1045
<i>Incidence</i>	1032	<i>Incidence</i>	1045
<i>Etiology</i>	1032	<i>Etiology</i>	1045
<i>Pathology</i>	1032	<i>Pathology</i>	1045
<i>Clinical Features</i>	1032	<i>Clinical Features</i>	1045
<i>Radiographic Findings</i>	1032	<i>Radiographic Findings</i>	1045
<i>Differential Diagnosis</i>	1033	<i>Differential Diagnosis</i>	1045
<i>Treatment</i>	1033	<i>Treatment</i>	1046
Osteoid Osteoma	1033	Dysplasia Epiphysealis Hemimelica (Trever Disease)	1046
<i>Incidence</i>	1033	<i>Incidence</i>	1046
<i>Etiology</i>	1033	<i>Etiology</i>	1047
<i>Pathology</i>	1033	<i>Pathology</i>	1047
<i>Clinical Features</i>	1034	<i>Clinical Features</i>	1047
<i>Radiographic Findings</i>	1034	<i>Radiographic Findings</i>	1047
<i>Differential Diagnosis</i>	1034	<i>Natural History</i>	1048
<i>Treatment</i>	1034	<i>Treatment</i>	1048
Osteoblastoma	1036	26 Malignant Bone Tumors	1049
<i>Incidence</i>	1036	Osteosarcoma	1049
<i>Pathology</i>	1036	<i>Classic Osteosarcoma</i>	1049
<i>Clinical Features</i>	1036	<i>Metastatic Osteosarcoma</i>	1061
<i>Radiographic Findings</i>	1037	Ewing Sarcoma and Peripheral Primitive Neuroectodermal Tumor	1061
<i>Differential Diagnosis</i>	1037	<i>Pathology</i>	1063
<i>Treatment</i>	1038	<i>Clinical Features</i>	1065
Langerhans Cell Histiocytosis (Histiocytosis X)	1038	<i>Radiographic Findings</i>	1066
<i>Eosinophilic Granuloma: Solitary and Multiple Without Extraskelatal Involvement</i>	1038	<i>Staging</i>	1067
<i>Pathology</i>	1038	<i>Biopsy</i>	1067
<i>Hand-Schüller-Christian Disease: Multifocal Eosinophilic Granuloma With Extraskelatal Involvement (Chronic Disseminated Type)</i>	1040	<i>Prognosis</i>	1068
<i>Letterer-Siwe Disease: Multifocal Eosinophilic Granuloma (Acute Disseminated or Infantile Form)</i>	1041	<i>Treatment</i>	1069
Nonossifying Fibroma and Fibrous Cortical Defect	1042	Chondrosarcoma	1071
<i>Incidence</i>	1042	<i>Pathology</i>	1072
		<i>Radiographic Findings</i>	1072
		<i>Treatment</i>	1073
		Soft Tissue Sarcomas	1073
		<i>Rhabdomyosarcoma</i>	1073
		<i>Nonrhabdomyosarcoma Soft Tissue Sarcoma</i>	1075

Section V

INJURIES

27 General Principles of Managing Orthopaedic Injuries	1131		
Properties of the Immature Skeleton	1131		
Plastic Deformation	1131		
Fractures	1131		
Remodeling and Overgrowth	1132		
Physal Injuries	1133		
Harris Growth Arrest Lines	1134		
Classification of Physal Injuries	1135		
Treatment of Physal Injuries	1136		
Complications of Physal Injuries	1137		
Assessment of Growth Disturbance	1137		
Treatment of Physal Arrest	1139		
Observation	1140		
Growth Modulation	1140		
Completion	1141		
Resection	1141		
Care of the Multiply Injured Child	1143		
Anatomic and Physiologic Characteristics			
Specific to Children	1143		
Management of Airway, Breathing, and Circulation	1144		
Primary and Secondary Assessments	1145		
Open Fractures	1146		
Overview of Treatment	1147		
Gunshot Wounds	1148		
Lawnmower Injuries	1148		
Compartment Syndrome	1149		
Incidence	1149		
Pathophysiology	1149		
Diagnosis	1149		
Prevention and Treatment	1150		
Vascular Injuries	1151		
Casts	1152		
Principles of Application	1152		
Materials	1153		
Child Abuse	1153		
Incidence	1154		
Diagnosis	1154		
Reporting	1154		
Summary	1155		
28 Spinal Injuries	1156		
Traumatic Injuries of the Cervical Spine	1156		
Anatomy	1156		
Epidemiology	1156		
Diagnosis	1157		
Radiographic Findings	1157		
Treatment	1160		
Traumatic Injuries of the Thoracic and Lumbar Spine	1165		
Anatomy	1166		
Mechanism of Injury	1166		
Diagnosis	1167		
Radiographic Findings	1168		
Treatment	1169		
Pharmacologic Treatment of Spinal Cord Injury	1172		
Spinal Cord Injury Without Radiographic Abnormality	1173		
Complications After Spinal Cord Injury	1174		
29 Upper Extremity Injuries	1175		
Injuries to the Clavicle	1175		
Anatomy	1175		
Mechanism of Injury	1175		
Diagnosis	1176		
Radiographic Findings	1177		
Treatment	1177		
Complications	1180		
Fractures of the Scapula	1180		
Anatomy	1180		
Mechanism of Injury	1180		
Diagnosis	1180		
Treatment	1181		
Complications	1181		
Associated Conditions	1182		
Fractures Involving the Proximal Humeral Physis	1182		
Anatomy	1182		
Mechanism of Injury	1183		
Classification	1183		
Diagnosis	1183		
Treatment	1184		
Complications	1185		
Traumatic Dislocation of the Glenohumeral Joint	1186		
Anatomy	1186		
Diagnosis	1187		
Treatment	1187		
Complications	1188		
Fractures of the Proximal Metaphysis and Shaft of the Humerus	1188		
Anatomy	1188		
Mechanism of Injury	1189		
Diagnosis	1190		
Treatment	1190		
Complications	1191		
Fractures About the Elbow	1191		
Supracondylar Fractures of the Humerus	1191		
Transphyseal Fractures	1216		
Lateral Condyle Fractures	1219		
Medial Epicondyle Fractures	1228		
Elbow Dislocations	1230		
Radial Head and Neck Fractures	1233		
Olecranon Fractures	1241		
Uncommon Elbow Fractures	1243		
Associated Conditions	1246		

Fractures of the Forearm	1247		
<i>Monteggia Fractures</i>	1247		
<i>Fractures of the Shaft of the Radius and Ulna</i>	1253		
<i>Fractures of the Distal Forearm</i>	1261		
Fractures and Dislocations of the Wrist and Hand	1268		
<i>Fractures of the Scaphoid</i>	1268		
<i>Dislocation and Fracture-Dislocation of the Immature Wrist</i>	1269		
<i>Fractures and Dislocations of the Hand</i>	1271		
30 Lower Extremity Injuries	1274		
Pelvis and Acetabulum	1274		
<i>Pelvis</i>	1274		
<i>Acetabulum</i>	1288		
Hip	1294		
<i>Hip Dislocations</i>	1294		
<i>Hip Fractures</i>	1303		
Femur	1316		
<i>Femoral Shaft Fractures</i>	1316		
Knee	1332		
<i>Distal Femoral Injuries and Fractures</i>	1332		
<i>Patellar Fractures</i>	1344		
<i>Tibial Tuberosity Fractures</i>	1348		
<i>Proximal Tibial Physeal Fractures</i>	1352		
<i>Proximal Tibiofibular Joint Dislocations</i>	1358		
Tibia and Fibula	1360		
<i>Anatomy</i>	1360		
<i>Tibial and Fibular Fractures</i>	1361		
<i>Proximal Tibial Metaphyseal Fractures</i>	1362		
<i>Tibial and Fibular Diaphyseal Fractures</i>	1364		
<i>Open Tibial Diaphyseal Fractures</i>	1369		
<i>Distal Tibial Metaphyseal Fractures</i>	1376		
<i>Stress Fractures of the Tibia</i>	1376		
<i>Ipsilateral Femoral and Tibial Fracture ("Floating Knee")</i>	1377		
Ankle	1378		
<i>Anatomy</i>	1378		
<i>Ankle Fractures</i>	1379		
<i>Classification</i>	1379		
<i>Clinical Features</i>	1381		
<i>Radiographic Findings</i>	1381		
<i>Treatment</i>	1383		
<i>Complications</i>	1389		
Foot	1399		
<i>Talar Fractures</i>	1399		
<i>Calcaneal Fractures</i>	1405		
<i>Tarsometatarsal (Lisfranc) Fractures</i>	1408		
<i>Metatarsal Fractures</i>	1412		
<i>Fractures of the Base of the Fifth Metatarsal</i>	1413		
<i>Phalangeal Fractures</i>	1415		
<i>Lawnmower Injuries</i>	1415		
<i>Puncture Injuries of the Foot</i>	1416		
		Section VI	
		NEUROMUSCULAR DISORDERS	
		31 Disorders of the Brain	1419
		Levels of Involvement	1419
		<i>Spinomuscular Level</i>	1419
		<i>Spinal Level</i>	1419
		<i>Neural Level</i>	1419
		<i>Myoneural Level</i>	1419
		<i>Extrapyramidal Level</i>	1419
		<i>Pyramidal (Corticospinal) Level</i>	1419
		<i>Cerebellar Level</i>	1420
		Cerebral Palsy	1420
		<i>Definition</i>	1420
		<i>Epidemiology</i>	1421
		<i>Etiology</i>	1421
		<i>Classification</i>	1421
		<i>Evaluation</i>	1422
		<i>Muscle Strength</i>	1428
		<i>Prognosis for Ambulation</i>	1428
		<i>Treatment</i>	1428
		<i>Management of Foot Involvement in Cerebral Palsy</i>	1434
		<i>Management of Knee Involvement in Cerebral Palsy</i>	1452
		<i>Management of Rotational Abnormalities of the Femur and Tibia</i>	1459
		<i>Management of Hip Involvement in Cerebral Palsy</i>	1460
		<i>Management of Upper Limb Involvement in Cerebral Palsy</i>	1481
		<i>Management of Spinal Deformity in Cerebral Palsy</i>	1484
		<i>Management of Fractures in Cerebral Palsy</i>	1496
		<i>Outcome Assessment</i>	1496
		Rett Syndrome	1497
		<i>Diagnosis</i>	1497
		<i>Pathogenesis</i>	1498
		<i>Clinical Features</i>	1498
		<i>Treatment</i>	1499
		Hereditary Spastic Paraparesis	1499
		<i>Pathogenesis</i>	1499
		<i>Clinical Features</i>	1499
		<i>Treatment</i>	1500
		Ataxia Syndromes	1501
		<i>Friedreich Ataxia (Hereditary Spinocerebellar Ataxia)</i>	1501
		32 Disorders of the Spinal Cord	1530
		Myelomeningocele	1530
		<i>Incidence</i>	1530
		<i>Embryology</i>	1531
		<i>Causative Factors</i>	1531
		<i>Pathology</i>	1532

Natural History	1533	34 Disorders of the Peripheral Nervous System	1680
Prognosis	1535	Hereditary Motor and Sensory Neuropathies	1680
Associated Health Problems	1535	Charcot-Marie-Tooth Disease	1680
Complications	1537	Hypertrophic Interstitial Neuritis (Dejerine-Sottas Disease)	1691
Treatment	1539	Refsum Disease	1693
Other Forms of Spinal Dysraphism	1562	Congenital and Acquired Analgia	1693
Lipomeningocele	1562	Congenital Insensitivity to Pain	1693
Tethered Cord (Thickened Filum Terminale)	1563	Familial Dysautonomia (Riley-Day Syndrome; Hereditary Sensory and Autonomic Neuropathy Type III)	1696
Diastematomyelia	1564	Congenital Sensory Neuropathy	1699
Spina Bifida Occulta	1565	Hereditary Sensory Radicular Neuropathy (Hereditary Sensory and Autonomic Neuropathy Type I)	1699
Caudal Regression Syndrome (Sacral and Lumbosacral Agenesis)	1565	Congenital Insensitivity to Pain With Anhidrosis (Hereditary Sensory and Autonomic Neuropathy Type IV)	1699
Spinal Muscular Atrophy	1568	Lesch-Nyhan Syndrome	1700
Etiology	1568	Syringomyelia	1700
Pathogenesis	1568	Guillain-Barré Syndrome (Acute Polyradiculoneuritis)	1701
Classification	1568	Cause and Pathophysiology	1701
Grading	1569	Diagnosis	1701
Differential Diagnosis	1569	Clinical Features	1702
Diagnostic Evaluation	1569	Differential Diagnosis	1703
Treatment	1571	Treatment	1703
33 Poliomyelitis	1582	Prognosis	1704
Worldwide Eradication Efforts	1582	Sciatic and Peroneal Nerve Palsy	1704
Postpolio Syndrome	1582	Causes	1704
Pathology	1583	Clinical Features	1704
Course and Prognosis	1583	Radiographic Findings	1705
Treatment Overview	1583	Treatment	1705
Acute Phase	1584	35 Muscle Diseases	1706
Convalescent Phase	1585	Muscular Dystrophies	1706
Chronic Phase	1586	Overview	1706
Management of the Hip	1591	Duchenne Muscular Dystrophy	1709
Soft Tissue Contracture	1591	Becker Muscular Dystrophy	1720
Gluteus Medius Paralysis	1593	Emery-Dreifuss Muscular Dystrophy	1721
Gluteus Maximus Paralysis	1594	Limb-Girdle Muscular Dystrophy	1722
Paralytic Dislocation of the Hip	1596	Facioscapulohumeral Muscular Dystrophy	1723
Management of the Knee	1598	Infantile Facioscapulohumeral Muscular Dystrophy	1725
Quadriceps Femoris Paralysis	1598	Scapuloperoneal Dystrophy	1725
Flexion Deformity of the Knee	1600	Congenital Muscular Dystrophy	1725
Genu Recurvatum	1601	Orthopaedic Disorders	1726
Flail Knee	1602	Myotonic Dystrophy	1726
Management of Specific Deformities of the Foot and Ankle	1603	Etiology	1726
Normal Physiology	1603	Clinical Features	1726
Treatment of Muscle Imbalance	1603	Medical Concerns	1728
Arthrodesis of the Foot and Ankle	1610	Treatment and Prognosis	1728
Management of the Trunk	1617		
Management of the Shoulder	1617		
Classification	1618		
Arthrodesis of the Shoulder	1618		
Management of the Elbow	1619		
Paralysis of the Biceps Brachii and Brachialis Muscles	1619		
Paralysis of the Triceps Brachii Muscle	1626		
Management of the Forearm	1626		

Metabolic Diseases of Muscle	1728	<i>Clinical Features</i>	1769
<i>Thomsen Myotonia</i>	1728	<i>Radiographic Findings</i>	1769
Polymyositis and Dermatomyositis	1729	<i>Orthopaedic Considerations</i>	1770
<i>Etiology</i>	1730	Spondyloepiphyseal Dysplasia	1772
<i>Diagnosis</i>	1730	<i>Spondyloepiphyseal Dysplasia Congenita</i>	1772
<i>Pathology</i>	1730	<i>Spondyloepiphyseal Dysplasia Tarda</i>	1774
<i>Clinical Features</i>	1730	Multiple Epiphyseal Dysplasia	1776
<i>Laboratory Findings</i>	1731	<i>Genetics</i>	1777
<i>Treatment</i>	1732	<i>Pathology</i>	1778
<i>Prognosis</i>	1733	<i>Clinical Features</i>	1778
Myositis Ossificans	1733	<i>Radiographic Findings</i>	1778
<i>Classification</i>	1733	<i>Orthopaedic Considerations</i>	1779
<i>Pathology</i>	1733	Diastrophic Dysplasia (Diastrophic Dwarfism)	1781
<i>Clinical Features</i>	1733	<i>Genetics</i>	1781
<i>Radiographic Findings</i>	1733	<i>Pathology</i>	1781
<i>Differential Diagnosis</i>	1734	<i>Clinical Features</i>	1781
<i>Treatment</i>	1734	<i>Radiographic Findings</i>	1782
Progressive Fibrosis of the Quadriceps	1734	<i>Diagnosis</i>	1784
<i>Etiology</i>	1735	<i>Orthopaedic Considerations</i>	1784
<i>Pathophysiology</i>	1735	<i>Prognosis</i>	1787
<i>Clinical Features</i>	1735	Kniest Dysplasia (Pseudometatrophic Dysplasia)	1788
<i>Treatment</i>	1735	<i>Genetics</i>	1788
Myasthenia Gravis	1735	<i>Pathology</i>	1789
<i>Incidence</i>	1735	<i>Clinical Features</i>	1789
<i>Etiology</i>	1735	<i>Radiographic Findings</i>	1790
<i>Clinical Features</i>	1735	<i>Treatment</i>	1790
<i>Diagnosis</i>	1736	<i>Orthopaedic Considerations</i>	1790
<i>Treatment</i>	1736	Chondrodysplasia Punctata	1790

Section VII

OTHER ORTHOPAEDIC DISORDERS

36 Skeletal Dysplasias	1749	Metaphyseal Chondrodysplasia	1792
Overview	1749	<i>Jansen Type</i>	1792
Nomenclature and Classification	1751	<i>Schmid Type</i>	1793
Achondroplasia	1751	<i>Cartilage–Hair Hypoplasia (McKusick Type)</i>	1797
<i>Genetics</i>	1751	Osteopetrosis	1799
<i>Pathophysiology</i>	1751	<i>Types</i>	1799
<i>Clinical Features</i>	1752	<i>Genetics</i>	1800
<i>Radiographic Findings</i>	1753	<i>Pathology</i>	1800
<i>Diagnosis</i>	1753	<i>Clinical Features</i>	1800
<i>Orthopaedic Considerations</i>	1753	<i>Radiographic Findings</i>	1801
<i>Outcomes Research</i>	1765	<i>Laboratory Findings</i>	1801
Hypochondroplasia	1766	<i>Prenatal Diagnosis</i>	1802
<i>Genetics</i>	1766	<i>Differential Diagnosis</i>	1802
<i>Clinical Features</i>	1766	<i>Treatment</i>	1802
<i>Radiographic Findings</i>	1766	<i>Orthopaedic Considerations</i>	1803
<i>Orthopaedic Considerations</i>	1766	Progressive Diaphyseal Dysplasia (Camurati-Engelmann Disease)	1803
<i>Treatment</i>	1767	<i>Genetics</i>	1803
Thanatophoric Dwarfism	1767	<i>Pathology</i>	1804
<i>Genetics</i>	1767	<i>Clinical Features</i>	1804
<i>Prenatal Diagnosis</i>	1767		
<i>Clinical Features</i>	1767		
<i>Radiographic Findings</i>	1767		
<i>Prognosis</i>	1767		
Pseudoachondroplasia	1767		
<i>Genetics</i>	1767		
<i>Pathology</i>	1768		

<i>Radiographic Findings</i>	1805	<i>Differential Diagnosis</i>	1819
<i>Laboratory Findings</i>	1805	<i>Treatment</i>	1819
<i>Differential Diagnosis</i>	1805	Mucopolysaccharidoses	1819
<i>Treatment</i>	1805	<i>Diagnosis</i>	1820
Osteopoikilosis	1805	<i>Radiographic Findings</i>	1820
<i>Genetics</i>	1805	<i>Types</i>	1820
<i>Pathology</i>	1806	Niemann-Pick Disease	1836
<i>Clinical Features</i>	1806	37 Orthopaedic-Related Syndromes	1837
<i>Radiographic Findings</i>	1806	Marfan Syndrome	1837
<i>Differential Diagnosis</i>	1807	<i>Heredity and Incidence</i>	1837
<i>Clinical Course</i>	1807	<i>Genetics</i>	1837
Osteopathia Striata	1807	<i>Clinical Features</i>	1837
<i>Genetics</i>	1807	<i>Diagnosis</i>	1839
<i>Clinical Features</i>	1807	<i>Differential Diagnosis</i>	1840
<i>Radiographic Findings</i>	1807	<i>Treatment</i>	1841
<i>Differential Diagnosis</i>	1807	<i>Infantile Marfan Syndrome</i>	1842
<i>Clinical Course</i>	1807	<i>Prognosis</i>	1843
Melorheostosis	1808	Hereditary Progressive Arthro-	
<i>Etiology</i>	1808	Ophthalmopathy (Stickler Syndrome)	1843
<i>Pathology</i>	1808	<i>Clinical Features</i>	1843
<i>Clinical Features</i>	1808	<i>Orthopaedic Manifestations</i>	1843
<i>Radiographic Findings</i>	1809	Congenital Contractural	
<i>Clinical Course</i>	1809	Arachnodactyly (Beals Syndrome)	1843
<i>Differential Diagnosis</i>	1810	<i>Clinical Features</i>	1843
<i>Treatment</i>	1810	<i>Radiographic Findings</i>	1844
<i>Orthopaedic Considerations</i>	1810	<i>Differential Diagnosis</i>	1844
Infantile Cortical Hyperostosis		<i>Treatment</i>	1845
(Caffey Disease)	1810	Homocystinuria	1845
<i>Genetics</i>	1810	<i>Biochemical Defect and Pathophysiology</i>	1846
<i>Pathology</i>	1811	<i>Clinical Features</i>	1846
<i>Clinical Features</i>	1811	<i>Diagnosis</i>	1848
<i>Radiographic Findings</i>	1811	<i>Treatment</i>	1848
<i>Prenatal Diagnosis</i>	1811	Nail-Patella Syndrome (Hereditary	
<i>Diagnosis</i>	1811	Onycho-Osteodysplasia)	1849
<i>Differential Diagnosis</i>	1811	<i>Inheritance and Genetics</i>	1849
<i>Treatment</i>	1811	<i>Clinical Features</i>	1849
<i>Orthopaedic Considerations</i>	1811	<i>Radiographic Findings</i>	1850
<i>Clinical Course</i>	1812	<i>Associated Anomalies</i>	1850
Pyknodysostosis	1812	<i>Treatment</i>	1850
<i>Genetics</i>	1812	Larsen Syndrome	1851
<i>Pathology</i>	1812	<i>Clinical Features</i>	1851
<i>Clinical Features</i>	1812	<i>Neurologic Evaluation</i>	1852
<i>Radiographic Findings</i>	1812	<i>Differential Diagnosis</i>	1853
<i>Differential Diagnosis</i>	1814	<i>Radiographic Findings</i>	1853
<i>Orthopaedic Considerations</i>	1814	<i>Treatment</i>	1855
<i>Clinical Course</i>	1815	<i>Summary</i>	1861
Cleidocranial Dysostosis	1815	Down Syndrome (Trisomy 21)	1861
<i>Genetics</i>	1815	<i>Clinical Features</i>	1863
<i>Clinical Features</i>	1815	<i>Treatment</i>	1863
<i>Radiographic Findings</i>	1816	Neurofibromatosis	1869
<i>Orthopaedic Considerations</i>	1817	<i>Historical Perspective</i>	1871
<i>Other Considerations</i>	1817	<i>Neurofibromatosis Type 1</i>	
Idiopathic Osteolysis	1817	<i>(von Recklinghausen Disease)</i>	1871
<i>Types</i>	1818	<i>Neurofibromatosis Type 2</i>	1876
<i>Hereditary Multicentric Osteolysis</i>		Fibrodysplasia Ossificans Progressiva	1877
<i>With Recessive Inheritance</i>	1819	<i>Cause</i>	1877
<i>Radiographic Findings</i>	1819	<i>Histology and Pathology</i>	1877

<i>Clinical Features</i>	1878	38 Metabolic and Endocrine Disorders of Bone	1928
<i>Radiographic Findings</i>	1879	Biology of Healthy Bone	1928
<i>Treatment</i>	1879	<i>Bone Cell Biology</i>	1928
Ehlers-Danlos Syndrome	1880	<i>Bone Matrix and Mineralization</i>	1928
<i>Clinical Features</i>	1880	Metabolic Bone Disorders	1929
<i>Classification</i>	1881	<i>Vitamin Disorders</i>	1929
<i>Treatment</i>	1882	<i>Hypophosphatemic Rickets</i>	1935
Gaucher Disease	1882	<i>Clinical Features</i>	1939
<i>Genetics and Heredity</i>	1882	<i>Treatment</i>	1941
<i>Pathology and Diagnosis</i>	1882	<i>Disorders of Vitamin A</i>	1942
<i>Clinical Features</i>	1883	<i>Vitamin C Deficiency</i>	1942
<i>Orthopaedic Manifestations</i>	1885	<i>Osteogenesis Imperfecta</i>	1944
<i>Treatment</i>	1888	Prognostication and Parental Counseling	1965
<i>Prognosis</i>	1889	<i>Osteoporosis</i>	1965
Arthrogryposis (Arthrogryposis Multiplex Congenita)	1889	<i>Hypophosphatasia</i>	1967
<i>Cause</i>	1890	<i>Osteopetrosis</i>	1969
<i>Genetics</i>	1891	<i>Renal Osteodystrophy</i>	1970
<i>Pathology</i>	1891	39 Hematologic Disorders	1976
<i>Clinical Features</i>	1891	Hemophilia	1976
<i>Differential Diagnosis</i>	1893	<i>Incidence</i>	1976
<i>Treatment</i>	1893	<i>Classification and Inheritance</i>	1976
Craniocarpotarsal Dysplasia (Freeman-Sheldon or Whistling Face Syndrome)	1904	<i>Clinical Features</i>	1976
<i>Clinical Features</i>	1904	<i>Treatment</i>	1982
<i>Treatment</i>	1904	<i>Athletic Participation</i>	1988
Cornelia de Lange Syndrome	1904	Sickle Cell Disease	1988
Rubinstein-Taybi Syndrome	1906	<i>Cause and Pathophysiology</i>	1988
<i>Orthopaedic Manifestations</i>	1906	<i>Orthopaedic Manifestations and Treatment</i>	1988
<i>Associated Anomalies</i>	1906	40 Pediatric Sports Medicine: Issues in Contemporary Sports Participation	1992
<i>Treatment</i>	1906	Current Patterns in Pediatric Sports Participation	1992
Otopalatodigital Syndrome	1907	<i>Sport Specialization</i>	1992
Proteus Syndrome	1907	<i>Overuse</i>	1993
<i>Clinical Features</i>	1909	<i>Burnout</i>	1994
<i>Diagnosis</i>	1910	Athletic Development	1995
<i>Differential Diagnosis</i>	1910	<i>Youth Athlete Development</i>	1995
<i>Orthopaedic Manifestations</i>	1911	The Pediatric Athlete's Shoulder	1996
<i>Treatment</i>	1911	<i>Anatomy</i>	1996
Klippel-Trénaunay Syndrome	1911	<i>Little League Shoulder</i>	1997
<i>Pathophysiology</i>	1911	<i>Glenohumeral Internal Rotation Deficit</i>	1999
<i>Clinical Features</i>	1911	<i>Shoulder Instability</i>	1999
<i>Diagnosis and Evaluation</i>	1912	The Pediatric Athlete's Elbow	2001
<i>Treatment</i>	1912	<i>Medial Elbow (Epicondyle Apophysitis and Avulsion)</i>	2002
Metatropic Dwarfism (Dysplasia)	1913	<i>Ulnar Collateral Ligament Injury</i>	2004
Camptomelic Dysplasia	1915	<i>Lateral Elbow</i>	2004
Chondroectodermal Dysplasia (Ellis-van Creveld Syndrome)	1917	<i>Osteochondritis Dissecans of the Capitellum</i>	2005
<i>Genetics</i>	1917	The Pediatric Athlete's Hand and Wrist	2006
<i>Clinical Features</i>	1917	The Pediatric Athlete's Hip	2006
<i>Radiographic Findings</i>	1918	<i>Apophysitis of the Hip and Pelvis</i>	2006
<i>Treatment</i>	1919	<i>Femoroacetabular Impingement</i>	2006
Asphyxiating Thoracic Dysplasia (Jeune Disease)	1920	<i>Apophyseal Avulsions</i>	2006
<i>Pathology</i>	1920		
<i>Clinical Features and Radiographic Findings</i>	1921		
<i>Treatment</i>	1921		

The Pediatric Athlete's Knee	2010	<i>Meniscal Injuries</i>	2028
<i>Overuse Conditions</i>	2010	<i>Tibial Eminence Fractures</i>	2029
<i>Collateral Ligament Injury</i>	2021	The Pediatric Athlete's Ankle	2038
<i>Pediatric Anterior Cruciate Ligament</i>		<i>Ankle Instability</i>	2038
<i>Injuries</i>	2022	<i>Osteochondral Lesions of the Talus</i>	2040
<i>Pediatric Posterior Cruciate Ligament</i>		The Pediatric Athlete's Foot	2043
<i>Injuries</i>	2027		