

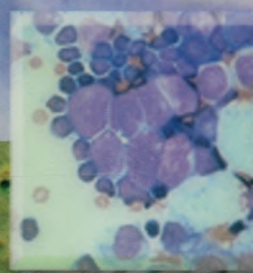
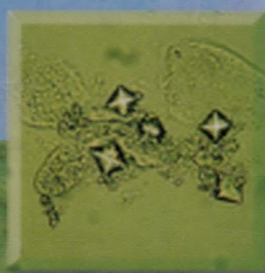
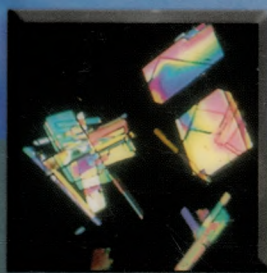
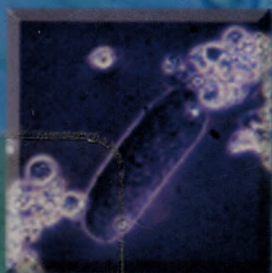
616-07
S90

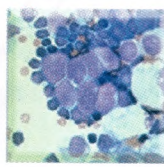
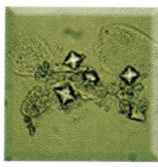
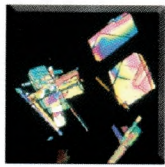
Susan King Strasinger

Marjorie Schaub Di Lorenzo

Urinalysis *and* Body Fluids

FIFTH EDITION





616-04
S 90

Urinalysis and Body Fluids

Fifth Edition

RB
53
1587
2008

Susan King Strasinger, DA, MT(ASCP)
Faculty Associate
The University of West Florida
Pensacola, Florida

**Marjorie Schaub Di Lorenzo, BS,
MT(ASCP)SH**
Adjunct Instructor
Division of Laboratory Sciences
Clinical Laboratory Science Program
University of Nebraska Medical Center
Omaha, Nebraska
Phlebotomy Program Coordinator
Health Professions
Nebraska Methodist College
Omaha, Nebraska

SOUTHEASTERN COMMUNITY
COLLEGE LIBRARY
WHITEVILLE, NC 28472

458012

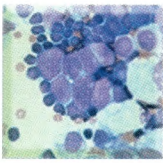
Universitatea de Stat de
Medicină și Farmacie
«Nicolae Testemițanu»

Facultatea Științifică Medicală

sl. 3



F. A. DAVIS COMPANY • Philadelphia



Contents

Chapter 1. Safety in the Clinical Laboratory, I

Biological Hazards, 2

Personal Protective Equipment, 4

Handwashing, 4

Disposal of Biological Waste, 5

Sharp Hazards, 5

Chemical Hazards, 6

Chemical Spills, 6

Chemical Handling, 6

Chemical Hygiene Plan, 6

Chemical Labeling, 6

Material Data Safety Sheets, 7

Radioactive Hazards, 7

Electrical Hazards, 7

Fire/Explosive Hazards, 8

Physical Hazards, 8

Chapter 2. Renal Function, II

Renal Physiology, 12

Renal Blood Flow, 12

Glomerular Filtration, 13

Tubular Reabsorption, 14

Tubular Secretion, 17

Renal Function Tests, 18

Glomerular Filtration Tests, 18

Tubular Reabsorption Tests, 22

*Tubular Secretion and
Renal Blood Flow Tests, 24*

Chapter 3. Introduction to Urinalysis, 29

History and Importance, 29

Urine Formation, 31

Urine Composition, 31

Urine Volume, 31

Specimen Collection, 32

Specimen Handling, 33

Specimen Integrity, 33

Specimen Preservation, 33

Types of Specimens, 34

Random Specimen, 34

First Morning Specimen, 34

Fasting Specimen (Second Morning), 34

2-Hour Postprandial Specimen, 35

Glucose Tolerance Specimens, 35

24-Hour (or Timed) Specimen, 36

Catheterized Specimen, 36

Midstream Clean-Catch Specimen, 36

Suprapubic Aspiration, 36

Prostatitis Specimen, 36

Pediatric Specimen, 37

Drug Specimen Collection, 37

Chapter 4. Physical Examination of Urine, 41

Color, 42

Normal Urine Color, 42

Abnormal Urine Color, 43

Clarity, 44

Normal Clarity, 44

Nonpathologic Turbidity, 44

Pathologic Turbidity, 45

Specific Gravity, 45

Urinometer, 46

Refractometer, 47

Harmonic Oscillation Densitometry, 48

Clinical Correlations, 48

Odor, 49

Chapter 5. Chemical Examination of Urine, 53

Reagent Strips, 54

- Reagent Strip Technique, 54*
- Handling and Storage of Reagent Strips, 55*
- Quality Control of Reagent Strips, 55*

pH, 56

- Clinical Significance, 56*
- Reagent Strip Reactions, 56*

Protein, 57

- Clinical Significance, 57*
- Prerenal Proteinuria, 57*
- Renal Proteinuria, 58*
- Postrenal Proteinuria, 58*
- Reagent Strip Reactions, 58*
- Reaction Interference, 59*

Glucose, 61

- Clinical Significance, 62*
- Reagent Strip (Glucose Oxidase) Reactions, 62*
- Reaction Interference, 63*
- Copper Reduction Test, 63*
- Comparison of Glucose Oxidase and Clinitest, 64*

Ketones, 64

- Clinical Significance, 64*
- Reagent Strip Reactions, 65*
- Reaction Interference, 65*

Blood, 65

- Clinical Significance, 66*
- Hematuria, 66*
- Hemoglobinuria, 66*
- Myoglobinuria, 66*
- Hemoglobinuria Versus Myoglobinuria, 67*
- Reagent Strip Reactions, 67*
- Reaction Interference, 67*

Bilirubin, 68

- Production of Bilirubin, 68*
- Clinical Significance, 68*

Reagent Strip (Diazo) Reactions, 68

Ictotest Tablets, 68

Reaction Interference, 69

Urobilinogen, 69

- Clinical Significance, 70*
- Reagent Strip Reactions and Interference, 70*
- Reaction Interference, 70*
- Ehrlich Tube Test, 70*
- Watson-Schwartz Differentiation Test, 71*
- Hoesch Screening Test for Porphobilinogen, 71*

Nitrite, 72

- Clinical Significance, 72*
- Reagent Strip Reactions, 72*
- Reaction Interference, 73*

Leukocyte Esterase, 73

- Clinical Significance, 73*
- Reagent Strip Reaction, 74*
- Reaction Interference, 74*

Specific Gravity, 74

- Reagent Strip Reaction, 75*
- Reaction Interference, 75*

Chapter 6. Microscopic Examination of Urine, 81

Macroscopic Screening, 82

Preparation and Examination of the Urine Sediment, 82

- Commercial Systems, 82*
- Specimen Preparation, 83*
- Specimen Volume, 83*
- Centrifugation, 83*
- Sediment Preparation, 83*
- Volume of Sediment Examined, 83*
- Examination of the Sediment, 83*
- Reporting the Microscopic Examination, 84*
- Correlation of Results, 84*

Sediment Examination Techniques, 84

- Sediment Stains, 85*

Cytodiagnostic Urine Testing, 87

Microscopy, 87

Types of Microscopy, 89

Sediment Constituents, 92

Red Blood Cells, 92

White Blood Cells, 94

Epithelial Cells, 95

Bacteria, 100

Yeast, 100

Parasites, 100

Spermatozoa, 100

Mucus, 102

Casts, 102

Urinary Crystals, 110

Urinary Sediment Artifacts, 119

Chapter 7. Quality Assessment and Management in the Urinalysis Laboratory, 127

Urinalysis Procedure Manual, 128

Preanalytical Factors, 129

Analytical Factors, 129

Postanalytical Factors, 134

Regulatory Issues, 135

Quality Management, 137

Medical Errors, 139

Chapter 8. Renal Disease, 143

Glomerular Disorders, 144

Glomerulonephritis, 144

Acute Poststreptococcal Glomerulonephritis, 144

Rapidly Progressive (Crescentic) Glomerulonephritis, 144

Goodpasture Syndrome, 144

Membranous Glomerulonephritis, 145

Membranoproliferative Glomerulonephritis, 145

Chronic Glomerulonephritis, 145

Immunoglobulin A Nephropathy, 145

Nephrotic Syndrome, 145

Minimal Change Disease, 146

Focal Segmental Glomerulosclerosis, 146

Alport Syndrome, 147

Diabetic Nephropathy, 147

Tubular Disorders, 147

Acute Tubular Necrosis, 149

Hereditary and Metabolic Tubular Disorders, 149

Fanconi Syndrome, 149

Nephrogenic Diabetes Insipidus, 149

Renal Glycosuria, 149

Interstitial Disorders, 149

Acute Pyelonephritis, 150

Chronic Pyelonephritis, 150

Acute Interstitial Nephritis, 151

Renal Failure, 151

Renal Lithiasis, 152

Chapter 9. Urine Screening for Metabolic Disorders, 159

Overflow Versus Renal Disorders, 160

Newborn Screening Tests, 160

Amino Acid Disorders, 161

Phenylalanine-Tyrosine Disorders, 161

Branched-Chain Amino Acid Disorders, 164

Tryptophan Disorders, 165

Cystine Disorders, 166

Porphyria Disorders, 167

Historical Note, 168

Mucopolysaccharide Disorders, 169

Purine Disorders, 170

Carbohydrate Disorders, 170

Chapter 10. Cerebrospinal Fluid, 177

Formation and Physiology, 178

Specimen Collection and Handling, 178

Appearance, 179

Traumatic Collection (Tap), 179

Uneven Distribution of Blood, 179

Clot Formation, 180

Xanthochromic Supernatant, 180

Cell Count, 180

Methodology, 181

Total Cell Count, 181

WBC Count, 181

Corrections for Contamination, 182

*Quality Control of Cerebrospinal Fluid and Other
Body Fluid Cell Counts, 182*

Differential Count on a Cerebrospinal Fluid Specimen, 182

Cytocentrifugation, 182

*Cerebrospinal Fluid Cellular Constituents,
183*

Chemistry Tests, 189

Cerebrospinal Protein, 189

Cerebrospinal Fluid Glucose, 191

Cerebrospinal Fluid Lactate, 192

Cerebrospinal Fluid Glutamine, 192

Microbiology Tests, 192

Gram Stain, 193

Serologic Testing, 194

Teaching Cerebrospinal Fluid Analysis, 195

Chapter 11. Semen, 199

Physiology, 199

Specimen Collection, 200

Specimen Handling, 201

Semen Analysis, 201

Appearance, 201

Liquefaction, 201

Volume, 201

Viscosity, 202

pH, 202

Sperm Concentration/Count, 202

Sperm Motility, 203

Sperm Morphology, 203

Additional Testing, 205

Sperm Viability, 205

Seminal Fluid Fructose, 206

Antisperm Antibodies, 206

Microbial and Chemical Testing, 207

Postvasectomy Semen Analysis, 207

Sperm Function Tests, 207

Semen Analysis Quality Control, 207

Chapter 12. Synovial Fluid, 211

Physiology, 211

**Specimen Collection
and Handling, 212**

Color and Clarity, 213

Viscosity, 213

Cell Counts, 213

Differential Count, 213

Crystal Identification, 214

Types of Crystals, 214

Slide Preparation, 215

Crystal Polarization, 216

Chemistry Tests, 217

Microbiologic Tests, 217

Serologic Tests, 218

Chapter 13. Serous Fluid, 221

Formation, 221

**Specimen Collection
and Handling, 222**

Transudates and Exudates, 223

General Laboratory Procedures, 223

Pleural Fluid, 223

Appearance, 224

Hematology Tests, 225

Chemistry Tests, 226

Microbiologic and Serologic Tests, 227

Pericardial Fluid, 228

Appearance, 228

Laboratory Tests, 228

Peritoneal Fluid, 229*Transudates Versus Exudates, 229**Appearance, 230**Laboratory Tests, 230***Chapter 14. Amniotic Fluid, 235****Physiology, 235***Function, 235**Volume, 236**Chemical Composition, 236**Differentiating Maternal Urine
From Amniotic Fluid, 237***Specimen Collection, 237***Indications for Amniocentesis, 237**Indications for Performing Amniocentesis, 237**Collection, 237***Specimen Handling
and Processing, 237****Color and Appearance, 238****Tests for Fetal Distress, 238***Hemolytic Disease of the Newborn, 238**Neural Tube Defects, 239***Tests for Fetal Maturity, 239***Fetal Lung Maturity, 239**Lecithin-Sphingomyelin Ratio, 240**Amniostat-FLM, 240**Foam Stability, 240**Microviscosity: Fluorescence
Polarization Assay, 241**Lamellar Bodies and Optical
Density, 241***Chapter 15. Fecal Analysis, 245****Physiology, 245***Diarrhea, 246**Steatorrhea, 248***Specimen Collection, 248****Macroscopic Screening, 248***Color, 248**Appearance, 248***Microscopic Examination
of Feces, 249***Fecal Leukocytes, 249**Muscle Fibers, 249**Qualitative Fecal Fats, 249***Chemical Testing of Feces, 250***Occult Blood, 250**Quantitative Fecal Fat Testing, 251***APT Test (Fetal Hemoglobin), 252***Fecal Enzymes, 253**Carbohydrates, 253***Appendix A, 259****Appendix B, 265****Answers to Case Studies
and Clinical Situations, 267****Answers to Study Questions, 273****Abbreviations, 277****Glossary, 279****Index, 285**

758012

