

616
K51

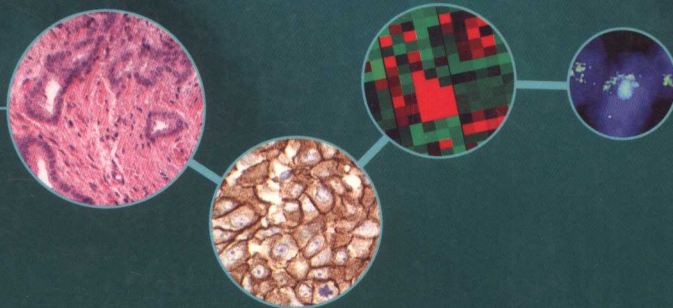
INTERNATIONAL
EDITION

Robbins and Cotran

Atlas of Pathology

SECOND EDITION

KLATT



616/K51

Robbins and Cotran
**Atlas of
Pathology**
SECOND EDITION

Edward C. Klatt, MD

Professor of Pathology
Department of Biomedical Sciences
Mercer University School of Medicine
Savannah, Georgia

752632

Universitatea de Stat de
Medicină și Farmacie
«Nicolae Testemițanu»
Biblioteca Științifică Medicină

SL2

SAUNDERS



ELSEVIER

88

CONTENTS

CHAPTER 1	Blood Vessels	1
CHAPTER 2	The Heart	29
CHAPTER 3	Hematopathology	63
CHAPTER 4	Red Blood Cell Disorders	93
CHAPTER 5	The Lung	105
CHAPTER 6	Head and Neck	151
CHAPTER 7	The Gastrointestinal Tract	167
CHAPTER 8	The Liver and Biliary Tract	213
CHAPTER 9	The Pancreas	241
CHAPTER 10	The Kidney	249
CHAPTER 11	The Lower Urinary Tract	289
CHAPTER 12	The Male Genital Tract	299
CHAPTER 13	The Female Genital Tract	315
CHAPTER 14	The Breast	363
CHAPTER 15	The Endocrine System	381
CHAPTER 16	The Skin	401

CHAPTER 17 **Bones, Joints, and Soft-Tissue Tumors** 441

CHAPTER 18 **Peripheral Nerve and Skeletal Muscle** 471

CHAPTER 19 **The Central Nervous System** 483

CHAPTER 20 **The Eye** 537

FIGURE CREDITS 551

INDEX 553

CHAPTER 1 Blood Vessels 1

CHAPTER 2 The Heart 29

CHAPTER 3 Hematology 83

CHAPTER 4 Red Blood Cell Disorders 83

CHAPTER 5 The Lung 105

CHAPTER 6 Head and Neck 151

CHAPTER 7 The Gastrointestinal Tract 187

CHAPTER 8 The Liver and Biliary Tract 213

CHAPTER 9 The Pancreas 241

CHAPTER 10 The Kidney 249

CHAPTER 11 The Lower Urinary Tract 289

CHAPTER 12 The Male Genital Tract 299

CHAPTER 13 The Female Genital Tract 316

CHAPTER 14 The Breast 363

CHAPTER 15 The Endocrine System 381

CHAPTER 16 The Skin 401