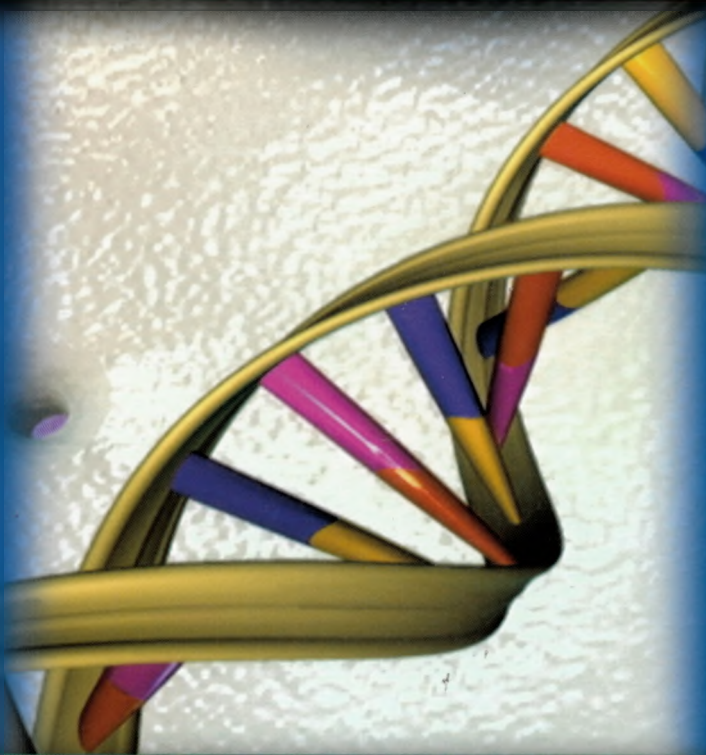


697.017  
M45

# CLINICAL LABORATORY IMMUNOLOGY



Connie R. Mahon  
Diane Tice

PRENTICE HALL,  
CLINICAL LABORATORY  
SCIENCE SERIES

ELIZABETH ZEIBIG, *Series Editor*



012.077  
M 15  
RB  
46.5  
M34  
2006  
C.2

# CLINICAL LABORATORY IMMUNOLOGY

This book is useful for historical reasons only. It does not contain current medical information.

Connie R. Mahon, MS, MT(ASCP)CLS

*Adjunct Assistant Professor  
Department of Pathology  
George Washington University  
Washington, DC*

Diane Tice, PhD, MT(ASCP)

*Associate Professor, Biology  
Morrisville State College  
Morrisville, New York*

SOUTHEASTERN COMMUNITY  
COLLEGE LIBRARY  
WHITEVILLE, NC 28472

457998

sl.3

Universitatea de Stat de  
Medicină și Farmacie  
«Nicolae Testemițanu»

Biblioteca Științifică Medicală

PEARSON  
Prentice  
Hall

Upper Saddle River, New Jersey 07458

# CONTENTS

---

## FOREWORD

## PREFACE

## ACKNOWLEDGMENTS

## CONTRIBUTORS

## ► PART I Introduction to Immunology

---

### CHAPTER 1 What Is Immunology? 1

---

*Diane Tice*

Introduction 2

What Is Immunology? 2

Historical Perspectives 3

*Early Immunology 3*

*Cowpox and Smallpox 3*

*Louis Pasteur and Immunization 4*

*Twentieth-Century Immunology 4*

*Moving Toward the Twenty-First Century 7*

Summary 7

### CHAPTER 2 Overview of the Immune System 9

---

*Connie Mahon, Diane Tice*

Introduction 10

Innate Immunity 11

*Physical and Chemical Barriers 11*

*Cellular Components 12*

*Acute Phase Proteins, Complement, and Interferons 15*

*Inflammation and Phagocytosis 18*

Adaptive Immunity 21

*Antigens and Antibodies 21*

*Humoral and Cell-Mediated Immune Responses 23*

*Major Histocompatibility Complex (MHC) Antigens 27*

*Primary versus Secondary Antibody Response 27*

Summary 31

### CHAPTER 3 Immunoglobulins 33

---

*Michelle S. Kanuth, Linda A. Smith*

Introduction 34

The Antibody Response 35

*B Cell Maturation 35*

*Antigen Independent B Cell Maturation 35*

*Antigen Dependent B Cell Maturation 37*

*T Cell and B Cell Interactions 37*

ix	Immunogens 40
xi	<i>Characteristics of Immunogens 40</i>
xiii	Immunoglobulins 41
xv	<i>Structure of the Immunoglobulin Molecule 41</i>
	<i>Diversity of the Immunoglobulin Molecule 43</i>
	<i>Immunoglobulin Classes 45</i>
	Monoclonal Antibodies 50
	<i>Characteristics of Monoclonal Antibodies 50</i>
	<i>Production of Monoclonal Antibodies 51</i>
	Summary 52

### CHAPTER 4 Infection and Immunity: Host–Parasite Relationships 55

---

*Connie Mahon*

Introduction 56

The Role of the Usual Microbial Flora 57

*Composition of the Microbial Flora 58*

*Factors that Determine the Composition of the Usual Microbial Flora 59*

*Role of the Usual Microbial Flora in the Pathogenesis of Infectious Disease 59*

*Role of the Usual Microbial Flora in the Host Defense against Infectious Disease 60*

Microbial Factors Contributing to Pathogenesis and Virulence 60

*What Determines Microbial Virulence? 61*

The Host Defense against Microbial Invasion 63

*First-Line Defenses 63*

*Second-Line Defenses 63*

*Mechanisms by which Microbes May Overcome the Host Defenses 64*

Summary 65

### CHAPTER 5 The Complement System 67

---

*Linda A. Smith, Michelle S. Kanuth*

Introduction 68

The Complement Pathways 70

*Classical Pathway 70*

*Alternate Pathway 73*

*Biological Activities of Complement 74*

*Complement Regulatory Proteins 76*

*Complement Receptors 78*

Disorders of Complement Function 78

*Complement and Microbial Organisms 78*

*Diseases Linked to Complement Deficiencies 79*

Detection of Complement	81
<i>Addressing Immune Deficiencies</i>	81
<i>Diagnostic Testing that Relies on Complement</i>	82
Summary	83

## ▶ PART II Clinical and Laboratory Diagnosis

### CHAPTER 6 Hypersensitivity 87

*Linda E. Miller*

Introduction	88
Types of Hypersensitivity	89
<i>Type I Hypersensitivity: Anaphylactic Hypersensitivity</i>	89
<i>Type II Hypersensitivity: Antibody-Dependent Cytotoxic Hypersensitivity</i>	93
<i>Type III Hypersensitivity: Immune Complex-Mediated Hypersensitivity</i>	95
<i>Type IV Hypersensitivity: Cell-Mediated or Delayed Hypersensitivity</i>	96
Summary	98

### CHAPTER 7 Immunologic Detection of Infectious Diseases 101

*Colonel David W. Craft, Sarah Learmonth, Angela Braham-Thompson*

Introduction	102
Principles of Immunological Detection Methods	103
<i>Manual Methods of Detection</i>	104
Automated Platforms	112
Immunologic Detection of Bacterial Infections	113
<i>Whooping Cough (Pertussis)</i>	113
<i>Legionnaires' Disease</i>	113
<i>Bacterial Meningitis and Sepsis</i>	114
<i>Gastroenteritis</i>	114
<i>Nontreponemal Tests for Syphilis</i>	114
<i>Treponemal Tests for Syphilis</i>	115
Immunologic Detection of Viral Infections	116
<i>Gastroenteritis</i>	117
<i>Blood-Borne and Body Fluid-Borne Diseases</i>	117
Immunologic Detection of Fungal and Parasitic Infection	126
<i>Pneumonia in Immunocompromised Patients</i>	126
<i>Cryptococcal Meningitis</i>	127
<i>Giardiasis and Cryptosporidiosis</i>	127
Future Trends	127

Verification and Validation of Testing Methods	127
<i>Regulatory Requirements</i>	127
<i>Statistical Analysis</i>	128
<i>Adopting a Serological Test for Use in the Clinical Laboratory</i>	129
Summary	130

### CHAPTER 8 Autoimmune Diseases and Immunodeficiency Disorders 133

*Diane Tice, Linda A. Smith, Michelle S. Kanuth*

Introduction	135
Autoimmune Diseases	135
<i>Definition of Autoimmunity</i>	135
<i>Normal Role of Autoantibodies</i>	136
<i>Development of Central and Peripheral Tolerance</i>	136
Classification of Autoimmune Diseases	138
<i>Organ-Specific Autoimmune Diseases</i>	139
<i>Systemic Autoimmune Diseases</i>	147
Primary Immunodeficiency Disorders	155
<i>Definition and Diagnosis of Immunodeficiencies</i>	155
<i>SCID: Severe B and T Cell Deficiencies</i>	156
<i>T Cell Activation Deficiencies</i>	157
<i>MHC Deficiencies</i>	158
<i>Deficient Immunoglobulin Production</i>	158
<i>Other Immunodeficiencies</i>	159
<i>Disorders of Phagocytes</i>	161
<i>Complement Deficiencies</i>	163
Secondary Immunodeficiencies	163
<i>Immunodeficiencies Due to Nutritional Deficits, Tumor, or Immunosuppression</i>	163
<i>HIV-Induced Immunodeficiency</i>	164
Summary	166

### CHAPTER 9 Transplant Immunology 169

*Patricia Reilly, Evan F. Ray*

Introduction	170
The Major Histocompatibility Complex	170
<i>Historical Background</i>	170
<i>Organization of the Human MHC on Chromosome 6</i>	171
<i>Inheritance/Haplotypes</i>	172
<i>Inheritance/Disequilibrium</i>	172
<i>Class I MHC</i>	172
<i>Class II MHC</i>	174
<i>Class III MHC</i>	176
<i>The Immune Response</i>	176
<i>Nomenclature</i>	177

Clinical Applications	178		
<i>HLA and Transplantation</i>	178		
<i>Solid Organ Transplantation</i>	179		
<i>Progenitor Cell Transplantation</i>	180		
<i>HLA and Disease Association</i>	180		
Summary	183		
<b>CHAPTER 10</b> Tumor Immunology		187	
<i>Kent J. Weinhold</i>			
Introduction	188		
Causes of Tumor Formation	189		
<i>Neoplasm, Carcinoma, and Sarcoma</i>	189		
<i>Environmental Factors</i>	189		
<i>Physical Factors</i>	189		
<i>Genetic Predisposition</i>	189		
<i>Hormonal Factors</i>	190		
<i>Viral Origin</i>	190		
Identification of Tumors	190		
<i>Identification and Characterization of Human TAA</i>	191		
<i>MART</i>	193		
Immune Response to Human Tumors	194		
Mechanisms of Tumor Escape	195		
Immunotherapy and Tumor Vaccines	197		
<i>Clinical Staging in the Standard Care of Treatment</i>	197		
<i>Immunotherapeutic Strategies</i>	198		
<i>Passive Cellular Immunotherapy</i>	198		
Summary	198		
<b>CHAPTER 11</b> Clinical Applications of Flow Cytometry		201	
<i>John Schmitz</i>			
Introduction	202		
Basic Principles of Flow Cytometry	203		
<i>Flow Cytometry Instrumentation</i>	203		
<i>Cellular Probes</i>	206		
<i>Monoclonal Antibodies</i>	206		
<i>Sample Processing</i>	206		
<i>Specimen Types for Flow Cytometry Analysis</i>	208		
Clinical Applications of Flow Cytometry	210		
<i>Enumeration of CD4 T-Lymphocytes in Peripheral Blood</i>	210		
<i>Enumeration of Fetal Hemoglobin Containing Cells</i>	211		
<i>Flow Cytometry in Transplantation</i>	212		
<i>Applications of Flow Cytometry in Hematology</i>	213		
<i>Flow Cytometry in Hematopathology</i>	213		
Future Trends in Flow Cytometry	214		
Summary	214		
<b>▶ PART III</b> Molecular Diagnostic Technology			
<b>CHAPTER 12</b> Hybridization Techniques			217
<i>Diane Tice</i>			
Introduction	218		
Basic Molecular Biology	218		
<i>History</i>	218		
<i>Structure and Function of DNA</i>	219		
<i>Structure and Function of RNA</i>	220		
<i>The Universal Genetic Code</i>	221		
<i>Transcription, Translation, and Replication</i>	221		
<i>Differences between Prokaryotic and Eukaryotic DNA</i>	223		
Purification and Analysis of Nucleic Acids	223		
<i>DNA Purification and Quantitation</i>	223		
<i>mRNA Purification and Quantitation</i>	224		
<i>Restriction Enzymes and Their Uses</i>	225		
<i>DNA Sequencing</i>	226		
Hybridization Techniques	227		
<i>Overview of Hybridization and Basic Blotting Techniques</i>	227		
<i>In Situ Hybridization</i>	229		
Applications of Hybridization Techniques in Immunology	230		
<i>Clinical Immunology and Microbial Immunology</i>	230		
<i>Research Application</i>	230		
Summary	231		
<b>CHAPTER 13</b> Amplification Techniques			233
<i>Steven Mahlen</i>			
Introduction	234		
Amplification Technology: An Overview	235		
<i>Polymerase Chain Reaction</i>	235		
<i>Reverse Transcriptase PCR (RT-PCR)</i>	242		
<i>Ligase Chain Reaction</i>	244		
<i>Nucleic Acid Sequence Based Amplification</i>	245		
<i>Branched DNA Detection</i>	245		
<i>In Situ Amplification</i>	246		
Future Trends in Molecular Immunology	248		
<i>Gene Chip Technology</i>	248		
Summary	250		

<b>CHAPTER 14</b> Molecular Applications in Cytogenetics	253	<b>CHAPTER 15</b> Histocompatibility Laboratory Techniques and Applications	277
<i>Betty Dunn</i>		<i>Patricia Reilly, Evan F. Ray</i>	
Introduction	254	Introduction	278
Classical Cytogenetics	255	Historical Overview	279
<i>Cell Cultures and Harvesting</i>	255	Serological Techniques	279
<i>Enzyme Treatment and Staining</i>	255	<i>Specimen Collection, Transportation, and Storage</i>	279
<i>Counting Chromosomes in Cells</i>	255	<i>Lymphocyte Preparation</i>	281
<i>Computer Imaging</i>	255	<i>HLA Testing: Complement Dependent Cytotoxicity</i>	
<i>Case Reports</i>	255	<i>Assay</i>	282
<i>Advantages and Limitations</i>	256	<i>Flow Cytometry</i>	285
Fluorescent In Situ Hybridization (FISH)	256	Cellular Techniques	287
<i>History</i>	256	<i>One Way Mixed Lymphocyte Reaction/Mixed Lymphocyte</i>	
<i>Theory</i>	257	<i>Culture</i>	287
<i>Procedure</i>	257	Molecular Techniques in HLA	288
<i>Hybridization to Target</i>	258	<i>Advantages of DNA-Based Testing</i>	288
Clinical Applications	262	<i>Specimen Collection and DNA Extraction</i>	289
<i>Contiguous Gene Syndromes (Microdeletions</i>		<i>Polymerase Chain Reaction</i>	289
<i>and Microduplications)</i>	262	<i>PCR-Sequence Specific Oligonucleotide Primers</i>	291
<i>Prenatal Diagnosis</i>	265	<i>PCR-Sequence Specific Oligonucleotide Probes</i>	292
<i>Acquired Abnormalities</i>	266	<i>Sequence Based Typing</i>	293
<i>Research Applications</i>	267	<i>Short Tandem Repeat Testing to Determine Bone Marrow</i>	
Advantages and Limitations of the FISH Procedure	268	<i>Engraftment</i>	293
<i>Advantages</i>	268	HLA Laboratories	
<i>Limitations</i>	268	<i>Types of HLA Laboratories</i>	294
Advanced Applications	269	<i>Accreditation/Regulatory Agencies</i>	294
<i>Whole Chromosome Paints</i>	270	<i>Personnel</i>	296
<i>All-Telomere FISH</i>	270	<i>Quality Assurance/Quality Control</i>	297
<i>Multicolor FISH</i>	270	Summary	299
<i>Spectral Karyotyping</i>	270		
<i>Color Banding or RX-FISH</i>	271		
<i>Comparative Genome Hybridization</i>	271		
<i>Microarrays</i>	271		
Summary	272		
		<b>GLOSSARY</b>	<b>301</b>
		<b>ANSWERS TO LEARNING ASSESSMENT</b>	
		<b>QUESTIONS</b>	<b>317</b>
		<b>INDEX</b>	<b>319</b>