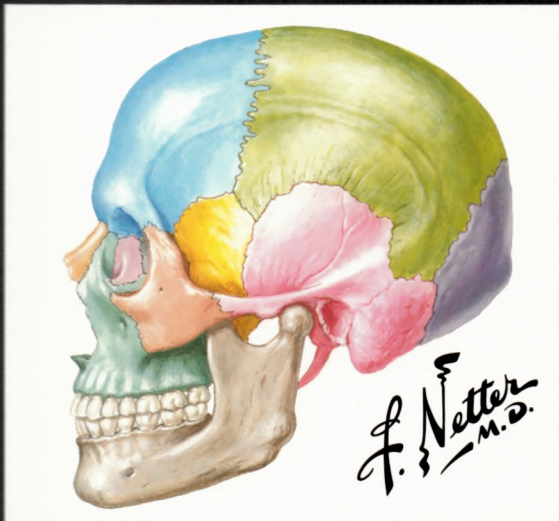


NETTER ATLAS of HUMAN ANATOMY Classic Regional Approach

8 EIGHTH EDITION



FRANK H. NETTER, MD

INTERNATIONAL EDITION

NOT FOR SALE IN U.S., U.K., EUROPEAN ECONOMIC AREA, CANADA, JAPAN, AUSTRALIA, AND NEW ZEALAND



EIGHTH EDITION

8

FRANK H. NETTER, MD

NETTER ATLAS
of HUMAN
ANATOMY

Classic Regional Approach



CONTENTS

7th Edition to 8th Edition Plate Number Conversion Chart Available Online at <https://tinyurl.com/Netter7to8conversion>

SECTION 1 INTRODUCTION • Plates 1–21

General Anatomy • Plates 1–3

- 1 Body Planes and Terms of Relationship
- 2 Body Parts: Anterior View of Female
- 3 Body Parts: Posterior View of Male

Systematic Anatomy • Plates 4–21

- 4 Overview of Nervous System
- 5 Dermatomes of Upper and Lower Limbs
- 6 Sympathetic Nervous System: Schema
- 7 Parasympathetic Nervous System: Schema
- 8 Overview of Skeletal System
- 9 Types of Synovial Joints
- 10 Overview of Muscular System
- 11 Segmental Motor Nerve Function
- 12 Cross Section of Skin
- 13 Overview of Cardiovascular System
- 14 Major Arteries and Pulse Points
- 15 Major Systemic Veins of Cardiovascular System
- 16 Overview of Lymph Vessels and Lymphoid Organs
- 17 Overview of Respiratory System.
- 18 Overview of Digestive System
- 19 Overview of Urinary System
- 20 Overview of Reproductive System
- 21 Overview of Endocrine System

Electronic Bonus Plates • Plates BP 1–BP 13

- BP 1 Pilosebaceous Apparatus
- BP 2 Major Body Cavities
- BP 3 Neurons and Synapses
- BP 4 Features of a Typical Peripheral Nerve
- BP 5 Sites of Visceral Referred Pain
- BP 6 Sympathetic Nervous System: General Topography
- BP 7 Parasympathetic Nervous System: General Topography
- BP 8 Cholinergic and Adrenergic Synapses: Schema
- BP 9 Architecture of Bone
- BP 10 Muscle Structure
- BP 11 Joints: Connective Tissues and Articular Cartilage
- BP 12 Cardiovascular System: Composition of Blood
- BP 13 Arterial Wall

SECTION 2

HEAD AND NECK • Plates 22–177

Surface Anatomy • Plates 22–24

- 22 Surface Anatomy of Head and Neck
- 23 Cutaneous Nerves of Head and Neck
- 24 Superficial Arteries and Veins of Face and Scalp

Bones and Joints • Plates 25–47

- 25 Skull: Anterior View
- 26 Skull: Radiographs
- 27 Skull: Lateral View
- 28 Skull: Lateral Radiograph
- 29 Cranium: Median Section
- 30 Calvaria
- 31 Cranial Base: Inferior View
- 32 Cranial Base: Superior View
- 33 Foramina and Canals of Cranial Base: Inferior View
- 34 Foramina and Canals of Cranial Base: Superior View
- 35 Cranium of Newborn
- 36 Bony Framework of Head and Neck
- 37 Nasal Skeleton and Paranasal Sinuses
- 38 Cranium: Posterior and Lateral Views
- 39 Mandible
- 40 Teeth
- 41 Tooth
- 42 Temporomandibular Joint
- 43 Cervical Vertebrae: Atlas and Axis
- 44 Cervical Vertebrae
- 45 Cervical Part of Spinal Column
- 46 External Craniocervical Ligaments
- 47 Internal Craniocervical Ligaments

Neck • Plates 48–58

- 48 Muscles of Facial Expression: Lateral View
- 49 Muscles of Neck: Anterior View
- 50 Superficial Veins of Neck
- 51 Fascial Layers of Neck
- 52 Cervical Fasciae
- 53 Infrahyoid and Suprahyoid Muscles
- 54 Muscles of Neck: Lateral View
- 55 Anterior and Lateral Cervical Muscles
- 56 Nerves of Neck
- 57 Nerves of Neck and Cervical Plexus
- 58 Carotid Arteries

825277

Nose • Plates 59–82

- 59 Skeleton of Nose
- 60 Muscles, Nerves, and Arteries of Face
- 61 Lateral Wall of Nasal Cavity
- 62 Lateral Wall of Nasal Cavity of Cranium
- 63 Medial Wall of Nasal Cavity (Nasal Septum)
- 64 Nerves of Nasal Cavity
- 65 Vasculature of Nasal Cavity
- 66 Nerves of Nasal Cavity: Bony Nasal Septum Turned Up
- 67 Paranasal Sinuses: Paramedian Views
- 68 Paranasal Sinuses: Changes with Age
- 69 Paranasal Sinuses: Coronal and Transverse Sections
- 70 Salivary Glands
- 71 Facial Nerve Branches and Parotid Gland
- 72 Muscles of Mastication: Masseter and Temporalis Muscle
- 73 Muscles of Mastication: Pterygoid Muscles
- 74 Maxillary Artery
- 75 Temporal and Infratemporal Fossae
- 76 Superficial Temporal and Maxillary Arteries
- 77 Mandibular Nerve (CN V₃)
- 78 Infratemporal Fossa
- 79 Ophthalmic and Maxillary Nerves
- 80 Autonomic Innervation of Nasal Cavity
- 81 Nerves and Arteries of Midface
- 82 Orientation of Nerves and Vessels of Cranial Base

Mouth • Plates 83–90

- 83 Inspection of Oral Cavity
- 84 Afferent Innervation of Oral Cavity and Tongue
- 85 Roof of Oral Cavity
- 86 Tongue and Salivary Glands: Sections
- 87 Suprahyoid Muscles
- 88 Tongue
- 89 Dorsum of Tongue
- 90 Fauces

Pharynx • Plates 91–102

- 91 Posterior View of Pharynx: Nerves and Vessels
- 92 Muscles of Pharynx: Partially Opened Posterior View
- 93 Pharynx: Opened Posterior View
- 94 Pharyngoesophageal Junction
- 95 Pharynx: Medial View
- 96 Muscles of Pharynx: Medial View
- 97 Muscles of Pharynx: Lateral View

775758

| | |
|-----|---------------------------------------|
| 98 | Nerves of Oral and Pharyngeal Regions |
| 99 | Arteries of Head and Neck |
| 100 | Veins of Head and Neck |
| 101 | Lymph Nodes of Head and Neck |
| 102 | Lymph Nodes of Pharynx and Tongue |

Larynx and Endocrine Glands • Plates 103–109

| | |
|-----|---------------------------------------|
| 103 | Thyroid Gland: Anterior View |
| 104 | Thyroid Gland: Posterior View |
| 105 | Thyroid and Parathyroid Glands |
| 106 | Cartilages of Larynx |
| 107 | Intrinsic Muscles of Larynx |
| 108 | Nerves and Coronal Section of Larynx |
| 109 | Action of Intrinsic Muscles of Larynx |

Eye • Plates 110–120

| | |
|-----|--|
| 110 | Eyelids |
| 111 | Lacrimal Apparatus |
| 112 | Extrinsic Eye Muscles |
| 113 | Nerves of Orbit |
| 114 | Superior and Anterior Views of Orbit |
| 115 | Arteries and Veins of Orbit and Eyelids |
| 116 | Eyeball: Transverse Section |
| 117 | Anterior and Posterior Chambers of Eyeball |
| 118 | Lens and Supporting Structures |
| 119 | Intrinsic Arteries and Veins of Eye |
| 120 | Vascular Supply of Eye |

Ear • Plates 121–126

| | |
|-----|--|
| 121 | Ear and Course of Sound in Cochlea |
| 122 | External Ear and Tympanic Cavity |
| 123 | Tympanic Cavity |
| 124 | Bony and Membranous Labyrinths |
| 125 | Bony and Membranous Labyrinths: Schema and Section |
| 126 | Orientation of Labyrinths in Cranium |

Brain and Meninges • Plates 127–142

| | |
|-----|---|
| 127 | Meninges and Diploic Veins |
| 128 | Meningeal Arteries |
| 129 | Meninges and Superficial Cerebral Veins |
| 130 | Dural Venous Sinuses: Sagittal Section |
| 131 | Dural Venous Sinuses: Cranial Base |
| 132 | Brain: Lateral Views |
| 133 | Brain: Medial Views |
| 134 | Brain: Inferior View |
| 135 | Ventricles of Brain |

| | |
|-----|------------------------------------|
| 136 | Circulation of Cerebrospinal Fluid |
| 137 | Basal Nuclei |
| 138 | Thalamus and Related Structures |
| 139 | Hippocampus and Fornix |
| 140 | Brain Stem |
| 141 | Ventricles and Cerebellum |
| 142 | Cerebellum |

Cranial and Cervical Nerves • Plates 143–162

| | |
|-----|---|
| 143 | Cranial Nerve Nuclei in Brain Stem: Schema (Posterior View) |
| 144 | Cranial Nerve Nuclei in Brain Stem: Schema (Medial View) |
| 145 | Cranial Nerves: Schema of Motor and Sensory Distribution |
| 146 | Olfactory Nerve (CN I) and Olfactory Pathways: Schema |
| 147 | Optic Nerve (CN II) and Visual Pathway: Schema |
| 148 | Oculomotor (CN III), Trochlear (CN IV), and Abducens (CN VI) Nerves: Schema |
| 149 | Trigeminal Nerve (CN V): Schema |
| 150 | Facial Nerve (CN VII): Schema |
| 151 | Vestibulocochlear Nerve (CN VIII): Schema |
| 152 | Glossopharyngeal Nerve (CN IX): Schema |
| 153 | Vagus Nerve (CN X): Schema |
| 154 | Accessory Nerve (CN XI): Schema |
| 155 | Hypoglossal Nerve (CN XII): Schema |
| 156 | Cervical Plexus: Schema |
| 157 | Autonomic Nerves in Neck |
| 158 | Autonomic Nerves in Head |
| 159 | Ciliary Ganglion: Schema |
| 160 | Pterygopalatine and Submandibular Ganglia: Schema |
| 161 | Otic Ganglion: Schema |
| 162 | Taste Pathways: Schema |

Cerebral Vasculature • Plates 163–175

| | |
|-----|---|
| 163 | Arteries to Brain and Meninges |
| 164 | Internal Carotid Artery in Petrous Part of Temporal Bone |
| 165 | Arteries to Brain: Schema |
| 166 | Arteries of Brain: Inferior Views |
| 167 | Cerebral Arterial Circle (of Willis) |
| 168 | Arteries of Brain: Frontal View and Section |
| 169 | Arteries of Brain: Lateral and Medial Views |
| 170 | Arteries of Brain: Branches of Vertebral and Basilar Arteries |
| 171 | Veins of Posterior Cranial Fossa |
| 172 | Deep Veins of Brain |
| 173 | Subependymal Veins of Brain |
| 174 | Hypothalamus and Hypophysis |
| 175 | Vasculature of Hypothalamus and Hypophysis |

Regional Imaging • Plates 176–177

- 176 Cranial Imaging (MRA and MRV)
- 177 Cranial Imaging (MRI)

Structures with High Clinical Significance • Tables 2.1–2.4

Cranial Nerves • Tables 2.5–2.8

Branches of Cervical Plexus • Table 2.9

Muscles • Tables 2.10–2.14

Electronic Bonus Plates • Plates BP 14–BP 32

- BP 14 Somatosensory System: Trunk and Limbs
- BP 15 Pyramidal System
- BP 16 3D Skull Reconstruction CTs
- BP 17 Degenerative Changes in Cervical Vertebrae
- BP 18 Atlantooccipital Junction
- BP 19 Muscles of Facial Expression: Anterior View
- BP 20 Musculature of Face
- BP 21 Arteries of Nasal Cavity: Bony Nasal Septum Turned Up
- BP 22 Nose and Maxillary Sinus: Transverse Section
- BP 23 Paranasal Sinuses
- BP 24 Subclavian Artery
- BP 25 Opening of Mandible
- BP 26 Afferent Innervation of Oral Cavity and Pharynx
- BP 27 Fasciae of Orbit and Eyeball
- BP 28 Tympanic Cavity: Medial and Lateral Views
- BP 29 Anatomy of Pediatric Ear
- BP 30 Auditory Tube (Eustachian)
- BP 31 Cranial Imaging (MRV and MRA)
- BP 32 Axial and Coronal MRIs of Brain

SECTION 3 BACK • Plates 178–201

Surface Anatomy • Plate 178

- 178 Surface Anatomy of Back

Vertebral Column • Plates 179–185

- 179 Vertebral Column
- 180 Thoracic Vertebrae
- 181 Lumbar Vertebrae
- 182 Vertebrae: Radiograph and MRI
- 183 Sacrum and Coccyx
- 184 Ligaments of Vertebral Column: Lumbosacral Region
- 185 Joints of Vertebral Column: Lumbar Region

Spinal Cord • Plates 186–194

| | |
|-----|---|
| 186 | Spinal Cord and Spinal Nerves |
| 187 | Spinal Nerve Roots and Vertebrae |
| 188 | Dermatomes |
| 189 | Spinal Meninges and Nerve Roots |
| 190 | Spinal Nerve, Roots, and Rami |
| 191 | Arteries of Spinal Cord: Schema |
| 192 | Arteries of Spinal Cord: Intrinsic Distribution |
| 193 | Veins of Spinal Cord and Vertebral Column |
| 194 | Veins of Vertebral Column: Vertebral Veins |

Muscles and Nerves • Plates 195–199

| | |
|-----|-------------------------------------|
| 195 | Muscles of Back: Superficial Layer |
| 196 | Muscles of Back: Intermediate Layer |
| 197 | Muscles of Back: Deep Layer |
| 198 | Nerves of Back |
| 199 | Nerves of Back of Neck |

Cross-Sectional Anatomy • Plates 200–201

| | |
|-----|--------------------------------------|
| 200 | Lumbar Region of Back: Cross Section |
| 201 | Typical Thoracic Spinal Nerve |

Structures with High Clinical Significance • Table 3.1

Muscles • Tables 3.2–3.4

Electronic Bonus Plates • Plates BP 33–BP 40

| | |
|-------|---|
| BP 33 | Ligaments of Vertebral Column |
| BP 34 | Cervical Spine: Radiographs |
| BP 35 | Cervical Spine: MRI and Radiograph |
| BP 36 | Thoracolumbar Spine: Lateral Radiograph |
| BP 37 | Lumbar Vertebrae: Radiographs |
| BP 38 | Lumbar Spine: MRIs |
| BP 39 | Vertebral Veins: Detail Showing Venous Communications |
| BP 40 | Spinal Cord Cross Sections: Fiber Tracts |

SECTION 4 THORAX • Plates 202–266

Surface Anatomy • Plate 202

| | |
|-----|---------------------------|
| 202 | Surface Anatomy of Thorax |
|-----|---------------------------|

Thoracic Skeleton • Plates 203–204

| | |
|-----|----------------------------|
| 203 | Bony Framework of Thorax |
| 204 | Ribs and Associated Joints |

Mammary Glands • Plates 205–208

- 205 Mammary Glands
- 206 Arteries of Breast
- 207 Lymph Vessels and Lymph Nodes of Breast
- 208 Lymphatic Drainage of Breast

Thoracic Wall and Diaphragm • Plates 209–216

- 209 Anterior Thoracic Wall: Superficial Dissection
- 210 Anterior Thoracic Wall: Deeper Dissection
- 211 Anterior Thoracic Wall: Internal View
- 212 Intercostal Nerves and Arteries
- 213 Veins of Thoracic Wall
- 214 Phrenic Nerve and Relationship to Pericardium
- 215 Diaphragm: Thoracic Surface
- 216 Diaphragm: Abdominal Surface

Lungs, Trachea and Bronchi • Plates 217–230

- 217 Lungs in Thorax: Anterior View
- 218 Lungs in Thorax: Posterior View
- 219 Lungs in Situ: Anterior View
- 220 Great Vessels of Mediastinum
- 221 Lungs: Medial Views
- 222 Bronchial Arteries and Veins
- 223 Bronchopulmonary Segments: Anterior and Posterior Views
- 224 Bronchopulmonary Segments: Medial and Lateral Views
- 225 Trachea and Major Bronchi
- 226 Bronchi and Intrapulmonary Airways
- 227 Intrapulmonary Blood Circulation: Schema
- 228 Lymph Vessels of Thorax and Pulmonary and Mediastinal Lymph Nodes
- 229 Autonomic Nerves of Thorax
- 230 Innervation of Tracheobronchial Tree: Schema

Heart • Plates 231–250

- 231 Heart in Situ
- 232 Heart: Anterior Exposure
- 233 Heart and Precordial Areas of Auscultation
- 234 Heart: Radiographs and CT Angiogram
- 235 Heart: Base and Diaphragmatic Surface
- 236 Pericardial Sac and Pericardial Cavity
- 237 Mediastinum: Cross Section
- 238 Thorax: Coronal Section of Heart and Ascending Aorta
- 239 Coronary Arteries and Cardiac Veins
- 240 Coronary Arteries: Imaging
- 241 Right Atrium and Ventricle
- 242 Left Atrium and Ventricle

| | |
|-----|--|
| 243 | Valvular Complex of Heart |
| 244 | Valvular Complex of Heart (Continued) |
| 245 | Atria, Ventricles, and Interventricular Septum |
| 246 | Heart Valves |
| 247 | Prenatal and Postnatal Circulation |
| 248 | Conducting System of Heart |
| 249 | Nerves of Thorax |
| 250 | Innervation of Heart: Schema |

Mediastinum • Plates 251–261

| | |
|-----|--|
| 251 | Mediastinum: Right Lateral View |
| 252 | Mediastinum: Left Lateral View |
| 253 | Phrenic Nerve |
| 254 | Esophagus in Situ |
| 255 | Esophagus: Constrictions and Relations |
| 256 | Musculature of Esophagus |
| 257 | Esophagogastric Junction |
| 258 | Arteries of Esophagus |
| 259 | Veins of Esophagus |
| 260 | Lymph Vessels and Lymph Nodes of Esophagus |
| 261 | Nerves of Esophagus |

Cross-Sectional Anatomy • Plates 262–266

| | |
|-----|---|
| 262 | Thorax: Axial CT Images |
| 263 | Cross Section of Thorax at T3 Vertebral Level |
| 264 | Cross Section of Thorax at T3/T4 Disc Level |
| 265 | Cross Section of Thorax at T4/T5 Disc Level |
| 266 | Cross Section of Thorax at T7 Vertebral Level |

Structures with High Clinical Significance • Tables 4.1–4.3

Muscles • Table 4.4

Electronic Bonus Plates • Plates BP 41–BP 52

| | |
|-------|--|
| BP 41 | Cervical Ribs and Related Variations |
| BP 42 | Muscle Attachments of Ribs |
| BP 43 | Muscles of Respiration |
| BP 44 | Intrapulmonary Airways: Schema |
| BP 45 | Anatomy of Ventilation and Respiration |
| BP 46 | Coronary Arteries: Right Anterolateral Views with Arteriograms |
| BP 47 | Coronary Arteries and Cardiac Veins: Variations |
| BP 48 | Intrinsic Nerves and Variations in Nerves of Esophagus |
| BP 49 | Arteries of Esophagus: Variations |
| BP 50 | Thorax: Coronal Section |
| BP 51 | Thorax: Coronal CTs |
| BP 52 | Innervation of Blood Vessels: Schema |

SECTION 5 ABDOMEN • Plates 267–351

Surface Anatomy • Plate 267

- 267 Surface Anatomy of Abdomen

Abdominal Wall • Plates 268–287

- 268 Bony Framework of Abdomen
269 Regions and Planes of Abdomen
270 Anterior Abdominal Wall: Superficial Dissection
271 Anterior Abdominal Wall: Intermediate Dissection
272 Anterior Abdominal Wall: Deep Dissection
273 Rectus Sheath: Cross Section
274 Anterior Abdominal Wall: Internal View
275 Posterolateral Abdominal Wall
276 Arteries of Anterior Abdominal Wall
277 Veins of Anterior Abdominal Wall
278 Nerves of Anterior Abdominal Wall
279 Intercostal Nerves
280 Inguinal Region: Dissections
281 Inguinal Canal and Spermatic Cord
282 Femoral Sheath and Inguinal Canal
283 Posterior Abdominal Wall: Internal View
284 Arteries of Posterior Abdominal Wall
285 Veins of Posterior Abdominal Wall
286 Lymph Vessels and Lymph Nodes of Posterior Abdominal Wall
287 Nerves of Posterior Abdominal Wall

Peritoneal Cavity • Plates 288–293

- 288 Greater Omentum and Abdominal Viscera
289 Mesenteries and Suspensory Muscle of Duodenum
290 Mesocolons and Root of Mesentery
291 Omental Bursa: Stomach Reflected
292 Omental Bursa: Cross Section
293 Peritoneum of Posterior Abdominal Wall

Stomach and Intestines • Plates 294–301

- 294 Stomach in Situ
295 Mucosa of Stomach
296 Duodenum in Situ
297 Mucosa and Musculature of Small Intestine
298 Ileocecal Junction
299 Cecum and Ileal Orifice
300 Vermiform Appendix
301 Mucosa and Musculature of Large Intestine

Liver, Gallbladder, Pancreas and Spleen • Plates 302–307

- 302 Surfaces and Bed of Liver
- 303 Liver in Situ: Vascular and Duct Systems
- 304 Liver Structure: Schema
- 305 Gallbladder, Extrahepatic Bile Ducts, and Pancreatic Duct
- 306 Pancreas in Situ
- 307 Spleen

Visceral Vasculature • Plates 308–318

- 308 Arteries of Stomach, Liver, and Spleen
- 309 Celiac Trunk and Branches
- 310 Arteries of Liver, Pancreas, Duodenum, and Spleen
- 311 Celiac Arteriogram and CT Angiogram
- 312 Arteries of Duodenum and Head of Pancreas
- 313 Arteries of Small Intestine
- 314 Arteries of Large Intestine
- 315 Veins of Stomach, Duodenum, Pancreas, and Spleen
- 316 Veins of Small Intestine
- 317 Veins of Large Intestine
- 318 Hepatic Portal Vein, Tributaries, and Portacaval Anastomoses

Visceral Nerves and Plexuses • Plates 319–329

- 319 Autonomic Nerves and Ganglia of Abdomen
- 320 Autonomic Innervation of Stomach and Duodenum
- 321 Autonomic Innervation of Stomach and Duodenum
(Continued)
- 322 Autonomic Innervation of Small Intestine
- 323 Autonomic Innervation of Large Intestine
- 324 Autonomic Innervation of Intestine: Schema
- 325 Autonomic Innervation of Esophagus, Stomach, and
Duodenum: Schema
- 326 Autonomic Reflex Pathways: Schema
- 327 Enteric Plexuses of Intestine
- 328 Autonomic Innervation of Liver: Schema
- 329 Autonomic Innervation of Pancreas: Schema

Kidneys and Suprarenal Glands • Plates 330–343

- 330 Kidneys in Situ: Anterior Views
- 331 Kidneys in Situ: Posterior Views
- 332 Suprarenal Glands
- 333 Gross Structure of Kidney
- 334 Intrarenal Arteries and Renal Segments
- 335 Ureters in Abdomen and Pelvis
- 336 Arteries of Ureters and Urinary Bladder
- 337 Renal Fascia

- 338 Lymph Vessels and Lymph Nodes of Kidneys and Urinary Bladder
- 339 Autonomic Nerves of Kidneys, Ureters, and Urinary Bladder
- 340 Autonomic Innervation of Kidneys and Abdominal Part of Ureters: Schema
- 341 Autonomic Nerves of Suprarenal Glands: Dissection and Schema
- 342 Arteries and Veins of Suprarenal Glands in Situ
- 343 Abdominal Wall and Viscera: Paramedian Section

Lymphatics • Plates 344

- 344 Lymphatic Drainage of Abdomen and Pelvis: Schema

Regional Imaging • Plates 345–346

- 345 Abdominal Scans: Axial CT Images
- 346 Abdominal Scans: Axial CT Images (Continued)

Cross-Sectional Anatomy • Plates 347–351

- 347 Cross Section at T10 Vertebral Level, Through Esophagogastric Junction
- 348 Cross Section at T12 Vertebral Level, Inferior to Xiphoid Process
- 349 Cross Section at T12/L1 Disc Level
- 350 Cross Section at L1/L2 Disc Level
- 351 Cross Section at L3/L4 Disc Level

Structures with High Clinical Significance • Tables 5.1–5.3

Muscles • Table 5.4

Electronic Bonus Plates • Plates BP 53–BP 83

- BP 53 Inguinal and Femoral Regions
- BP 54 Indirect Inguinal Hernia
- BP 55 Variations in Position and Contour of Stomach in Relation to Body Habitus
- BP 56 Layers of Duodenal Wall
- BP 57 CT and MRCP Showing Appendix, Gallbladder, and Ducts; Nerve Branches of Hepatic Artery
- BP 58 Topography of Liver
- BP 59 Variations in Form of Liver
- BP 60 Sigmoid Colon: Variations in Position
- BP 61 Variations in Arterial Supply to Cecum and Posterior Peritoneal Attachment of Cecum
- BP 62 Variations in Pancreatic Duct
- BP 63 Variations in Cystic, Hepatic, and Pancreatic Ducts
- BP 64 Variations in Cystic Arteries
- BP 65 Variations in Hepatic Arteries

- BP 66 Variations and Anomalies of Hepatic Portal Vein
- BP 67 Variations in Celiac Trunk
- BP 68 Variations in Colic Arteries
- BP 69 Variations in Colic Arteries (Continued)
- BP 70 Variations in Renal Artery and Vein
- BP 71 Histology of Renal Corpuscle
- BP 72 Nephron and Collecting Tubule: Schema
- BP 73 Blood Vessels in Parenchyma of Kidney: Schema
- BP 74 Lymph Vessels and Lymph Nodes of Stomach
- BP 75 Lymph Vessels and Lymph Nodes of Pancreas
- BP 76 Lymph Vessels and Lymph Nodes of Small Intestine
- BP 77 Lymph Vessels and Lymph Nodes of Large Intestine
- BP 78 Lymph Vessels and Lymph Nodes of Liver
- BP 79 Schematic Cross Section of Abdomen at T12 Vertebral Level
- BP 80 Transverse Section of Abdomen: L5 Vertebral Level, Near Transtubercular Plane
- BP 81 Transverse Section of Abdomen: S1 Vertebral Level, Anterior Superior Iliac Spine
- BP 82 Axial CT Image of Upper Abdomen
- BP 83 Arterial Variations and Collateral Supply of Liver and Gallbladder

SECTION 6 PELVIS • Plates 352–421

Surface Anatomy • Plate 352

- 352 Surface Anatomy of Pelvis

Bony Pelvis • Plates 353–357

- 353 Bony Framework of Pelvis
- 354 Male and Female Pelvis: Radiographs
- 355 Sex Differences of Bony Pelvis: Measurements
- 356 Ligaments of Bony Pelvis
- 357 Ligaments of Hip Bone

Pelvic Diaphragm and Viscera • Plates 358–368

- 358 Pelvic Diaphragm: Female
- 359 Pelvic Diaphragm (Female): Medial and Superior Views
- 360 Pelvic Diaphragm (Female): Inferior Views
- 361 Pelvic Diaphragm (Male): Superior View
- 362 Pelvic Diaphragm (Male): Inferior View
- 363 Pelvic Cavity: Female
- 364 Pelvic Viscera and Perineum: Female
- 365 Female Internal Genital Organs
- 366 Endopelvic Fascia
- 367 Pelvic Cavity: Male
- 368 Pelvic Viscera and Perineum: Male

Urinary Bladder • Plates 369–371

- 369 Urinary Bladder: Orientation and Supports
- 370 Female Urethral Sphincters
- 371 Urinary Bladder: Female and Male

Female Internal Genitalia • Plates 372–376

- 372 Uterus, Vagina, and Supporting Structures
- 373 Uterus: Fascial Ligaments
- 374 Uterus and Adnexa
- 375 Pelvic Viscera: Female
- 376 Pelvic Ligaments

Female Perineum and External Genitalia • Plates 377–380

- 377 Female Perineum and External Genitalia
- 378 Female Perineum (Superficial Dissection)
- 379 Female Perineum (Deeper Dissection)
- 380 Female Perineal Spaces

Male Perineum and External Genitalia • Plates 381–388

- 381 Male Perineum and External Genitalia (Superficial Dissection)
- 382 Male Perineum and External Genitalia (Deeper Dissection)
- 383 Penis
- 384 Male Perineal Spaces
- 385 Prostate and Seminal Gland
- 386 Urethra
- 387 Descent of Testis
- 388 Scrotum and Contents

Homologies of Male and Female Genitalia • Plates 389–390

- 389 Homologues of External Genitalia
- 390 Homologues of Internal Genitalia

Male Internal Genitalia • Plates 391–392

- 391 Testes
- 392 Testis, Epididymis, and Ductus Deferens

Rectum and Anal Canal • Plates 393–399

- 393 Rectum in Situ: Female and Male
- 394 Ischioanal Fossae
- 395 Rectum and Anal Canal
- 396 Anorectal Musculature
- 397 External Anal Sphincter: Perineal Views
- 398 Perineal and Pelvic Extraperitoneal Spaces: Actual and Potential
- 399 Pelvic Scans: Sagittal T2-Weighted MRIs

Vasculature • Plates 400–410

- 400 Arteries of Rectum and Anal Canal: Male Posterior View
- 401 Veins of Rectum and Anal Canal: Female Anterior View
- 402 Arteries and Veins of Pelvic Viscera: Female Anterior View
- 403 Arteries and Veins of Testis: Anterior View
- 404 Arteries of Pelvis: Female
- 405 Arteries and Veins of Pelvis: Male
- 406 Arteries and Veins of Perineum and Uterus
- 407 Arteries and Veins of Perineum: Male
- 408 Lymph Vessels and Lymph Nodes of Pelvis and Genitalia: Female
- 409 Inguinal Nodes and Lymph Vessels of Perineum: Female
- 410 Lymph Vessels and Lymph Nodes of Pelvis and Genitalia: Male

Nerves of Perineum and Pelvic Viscera • Plates 411–419

- 411 Nerves of External Genitalia: Male
- 412 Nerves of Pelvic Viscera: Male
- 413 Nerves of Perineum: Male
- 414 Nerves of Pelvic Viscera: Female
- 415 Nerves of Perineum and External Genitalia: Female
- 416 Neuropathways in Parturition
- 417 Innervation of Female Reproductive Organs: Schema
- 418 Innervation of Male Reproductive Organs: Schema
- 419 Innervation of Urinary Bladder and Lower Ureter: Schema

Cross-Sectional Anatomy • Plates 420–421

- 420 Male Pelvis: Cross Section of Bladder–Prostate Junction
- 421 Female Pelvis: Cross Section of Vagina and Urethra

Structures with High Clinical Significance • Tables 6.1–6.3

Muscles • Table 6.4

Electronic Bonus Plates • Plates BP 84–BP 95

- BP 84 Fasciae of Pelvis and Perineum: Male and Female
- BP 85 Cystourethrograms: Male and Female
- BP 86 Female Urethra
- BP 87 Genetics of Reproduction
- BP 88 Menstrual Cycle
- BP 89 Uterine Development
- BP 90 Ovary, Oocytes, and Follicles
- BP 91 Variations in Hymen
- BP 92 Cross Section of Pelvis Through Prostate
- BP 93 Arteries and Veins of Pelvis: Male (Featuring Prostate)
- BP 94 Cross Section of Lower Pelvis
- BP 95 Endocrine Glands, Hormones, and Puberty

SECTION 7 UPPER LIMB • Plates 422–490

Surface Anatomy • Plates 422–426

- 422 Surface Anatomy of Upper Limb
- 423 Cutaneous Innervation of Upper Limb
- 424 Superficial Veins of Proximal Upper Limb
- 425 Superficial Veins of Forearm and Hand
- 426 Lymph Vessels and Lymph Nodes of Upper Limb

Shoulder and Axilla • Plates 427–439

- 427 Humerus and Scapula
- 428 Muscle Attachment Sites of Humerus, Scapula, and Clavicle
- 429 Clavicle and Sternoclavicular Joint
- 430 Shoulder: Anteroposterior Radiograph
- 431 Joints of Shoulder
- 432 Muscles of Shoulder
- 433 Axilla: Posterior Wall
- 434 Rotator Cuff Muscles
- 435 Pectoral, Clavipectoral, and Axillary Fasciae
- 436 Shoulder Region
- 437 Axillary Artery and Anastomoses Around Scapula
- 438 Axilla: Anterior View
- 439 Brachial Plexus: Schema

Arm • Plates 440–445

- 440 Muscles of Arm: Anterior Compartment
- 441 Muscles of Arm: Posterior Compartment
- 442 Brachial Artery in Situ
- 443 Arteries of Upper Limb
- 444 Veins of Upper Limb
- 445 Arm: Serial Cross Sections

Elbow and Forearm • Plates 446–461

- 446 Bones of Elbow
- 447 Elbow: Radiographs
- 448 Ligaments of Elbow
- 449 Bones of Forearm
- 450 Muscles of Forearm: Pronators and Supinator
- 451 Muscles of Forearm: Extensors of Wrist and Digits
- 452 Muscles of Forearm: Flexors of Wrist
- 453 Muscles of Forearm: Flexors of Digits
- 454 Muscles of Forearm: Superficial Part of Posterior Compartment
- 455 Muscles of Forearm: Deep Part of Posterior Compartment

- 456 Muscles of Forearm: Superficial Part of Anterior Compartment
- 457 Muscles of Forearm: Anterior Compartment
- 458 Muscles of Forearm: Deep Part of Anterior Compartment
- 459 Attachments of Muscles of Forearm: Anterior View
- 460 Attachments of Muscles of Forearm: Posterior View
- 461 Forearm: Serial Cross Sections

Wrist and Hand • Plates 462–481

- 462 Carpal Bones
- 463 Movements of Wrist
- 464 Ligaments of Wrist: Anterior View
- 465 Ligaments of Wrist: Posterior View
- 466 Bones of Hand
- 467 Wrist and Hand: Radiographs
- 468 Metacarpophalangeal and Interphalangeal Ligaments
- 469 Wrist and Hand: Superficial Palmar Dissections
- 470 Wrist and Hand: Deeper Palmar Dissections
- 471 Lumbrical Muscles, Midpalmar and Thenar Spaces, and Tendon Sheaths
- 472 Flexor Tendons, Arteries, and Nerves at Wrist
- 473 Spaces and Tendon Sheaths of Hand
- 474 Flexor and Extensor Tendons in Fingers
- 475 Muscles of Hand
- 476 Arteries of Hand: Palmar Views
- 477 Wrist and Hand: Superficial Lateral Dissection
- 478 Wrist and Hand: Superficial Dorsal Dissection
- 479 Nerves and Arteries of Dorsal Hand and Wrist
- 480 Extensor Tendons at Wrist
- 481 Fingers

Nerves and Vasculature • Plates 482–489

- 482 Cutaneous Innervation of Wrist and Hand
- 483 Arteries and Nerves of Upper Limb: Anterior View
- 484 Nerves of Upper Limb
- 485 Musculocutaneous Nerve
- 486 Median Nerve
- 487 Ulnar Nerve
- 488 Radial Nerve in Arm and Nerves of Posterior Shoulder
- 489 Radial Nerve in Forearm and Hand

Regional Imaging • Plate 490

- 490 Shoulder MRI and CT

Structures with High Clinical Significance • Tables 7.1–7.2

Nerves of Brachial Plexus • Tables 7.3–7.4

Muscles • Tables 7.5–7.8

Electronic Bonus Plates • Plates BP 96–BP 102

- BP 96 Arteries of Arm and Proximal Forearm
- BP 97 Arteries of Forearm and Hand
- BP 98 Ligaments of Wrist: Posterior and Anterior Views
- BP 99 Flexor and Extensor Zones of Hand
- BP 100 Cross Sections Through Metacarpal and Distal Carpal Bones
- BP 101 Cross Section of Hand: Axial View
- BP 102 Cross Section of Hand: Axial View (Continued)

SECTION 8 LOWER LIMB • Plates 491–556

Surface Anatomy • Plates 491–494

- 491 Surface Anatomy of Lower Limb
- 492 Superficial Veins of Lower Limb: Anterior View
- 493 Superficial Veins of Lower Limb: Posterior View
- 494 Lymph Vessels and Lymph Nodes of Lower Limb

Hip, Buttock, and Thigh • Plates 495–515

- 495 Hip Bone
- 496 Hip Joint
- 497 Hip Joint: Anteroposterior Radiograph
- 498 Attachments of Muscles of Hip and Thigh: Anterior View
- 499 Attachments of Muscles of Hip and Thigh: Posterior View
- 500 Femur
- 501 Muscles of Hip and Thigh: Lateral View
- 502 Muscles of Thigh: Anterior Compartment
- 503 Muscles of Thigh: Medial Compartment
- 504 Muscles of Hip and Thigh: Posterior Views
- 505 Psoas and Iliacus Muscle
- 506 Lumbosacral Plexuses
- 507 Lumbar Plexus
- 508 Sacral and Coccygeal Plexuses
- 509 Arteries of Thigh: Anterior Views
- 510 Arteries of Thigh: Anterior View of Deeper Dissection
- 511 Arteries of Thigh: Posterior View
- 512 Nerves of Buttock
- 513 Hip Bursae: Posterior and Anterolateral Views
- 514 Arteries of Femoral Head and Neck
- 515 Thigh: Serial Cross Sections

Knee • Plates 516–523

- 516 Knee: Medial and Lateral Views
- 517 Knee: Anterior Views
- 518 Knee: Interior Views
- 519 Knee: Cruciate and Collateral Ligaments
- 520 Knee: Anteroposterior Radiograph and Posterior View
- 521 Knee: Posterior and Sagittal Views
- 522 Arteries of Lower Limb
- 523 Veins of Lower Limb

Leg • Plates 524–534

- 524 Tibia and Fibula: Anterior and Posterior Views
- 525 Tibia and Fibula: Additional Views and Cross Section
- 526 Attachments of Muscles of Leg
- 527 Muscles of Leg: Superficial Part of Posterior Compartment
- 528 Muscles of Leg: Superficial Part of Posterior Compartment (Partial Dissection)
- 529 Muscles of Leg: Deep Part of Posterior Compartment
- 530 Muscles of Leg: Lateral Compartment
- 531 Muscles of Leg: Anterior Compartment
- 532 Muscles of Leg: Anterior Compartment (Continued)
- 533 Veins of Leg
- 534 Leg: Cross Sections and Compartments

Ankle and Foot • Plates 535–549

- 535 Bones of Foot: Superior and Inferior Views
- 536 Bones of Foot: Lateral View
- 537 Calcaneus
- 538 Ligaments of Ankle and Foot
- 539 Ligaments of Foot: Plantar View
- 540 Tendon Sheaths of Ankle
- 541 Muscles of Dorsum of Foot: Superficial Dissection
- 542 Muscles of Dorsum of Foot: Deep Dissection
- 543 Sole of Foot: Superficial Dissection
- 544 Muscles of Sole of Foot: First Layer
- 545 Muscles of Sole of Foot: Second Layer
- 546 Muscles of Sole of Foot: Third Layer
- 547 Interosseous Muscles and Deep Arteries of Foot
- 548 Interosseous Muscles of Foot
- 549 Cross Section of Foot

Nerves • Plates 550–554

- 550 Femoral Nerve and Lateral Femoral Cutaneous Nerve
- 551 Obturator Nerve
- 552 Sciatic Nerve and Posterior Femoral Cutaneous Nerve
- 553 Tibial Nerve
- 554 Common Fibular Nerve

Regional Imaging • Plates 555–556

- 555 Hip: MRI and 3D CT
- 556 Ankle: Radiographs

Structures with High Clinical Significance • Tables 8.1–8.2

Nerves of Lumbosacral Plexus • Tables 8.3–8.4

Muscles • Tables 8.5–8.8

Electronic Bonus Plates • Plates BP 103–BP 112

- BP 103 Arteries of Knee and Foot
- BP 104 Cross-Sectional Anatomy of Hip: Axial View
- BP 105 Arteries of Thigh and Knee
- BP 106 Leg: Serial Cross Sections
- BP 107 Osteology of Knee
- BP 108 Knee Radiograph: Lateral View
- BP 109 Foot: Nerves and Arteries
- BP 110 Cross-Sectional Anatomy of Ankle and Foot
- BP 111 Cross-Sectional Anatomy of Foot
- BP 112 Anatomy of Toenail

References

Index

Available Online (see inside front cover)

- Bonus Plates
- Study Guides
- Self-Assessments