

616
K 81

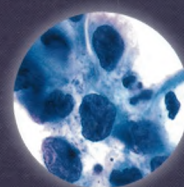
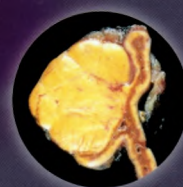
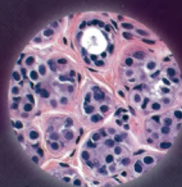
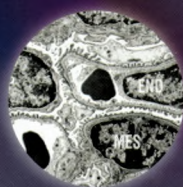
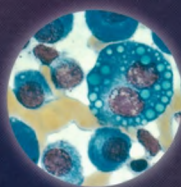
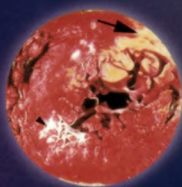
TENTH EDITION



Enhanced
DIGITAL
VERSION
Included

ROBBINS
& COTRAN

PATHOLOGIC BASIS OF DISEASE



KUMAR
ABBAS
ASTER



616
K 81

ROBBINS & COTRAN

PATHOLOGIC BASIS OF DISEASE

TENTH EDITION

Vinay Kumar, MBBS, MD, FRCPath

Alice Hogge and Arthur A. Baer Distinguished Service Professor of Pathology
Biologic Sciences Division and the Pritzker Medical School
The University of Chicago
Chicago, Illinois

Abul K. Abbas, MBBS

Emeritus Professor and Chair
Department of Pathology
University of California San Francisco
San Francisco, California

Jon C. Aster, MD, PhD

Michael Gimbrone Professor of Pathology
Brigham and Women's Hospital and Harvard Medical School
Boston, Massachusetts

Associate Editor

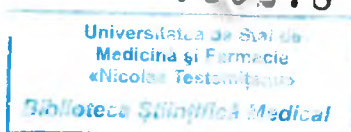
Jerrold R. Turner, MD, PhD

Professor of Pathology and Medicine
Brigham and Women's Hospital
Harvard Medical School
Boston, Massachusetts

WITH ILLUSTRATIONS BY:

James A. Perkins, MS, MFA
Distinguished Professor of Medical Illustration
Rochester Institute of Technology
Rochester, New York

760278



SL3



ELSEVIER

Contents

CHAPTER 1	The Cell as a Unit of Health and Disease <i>Richard N. Mitchell</i>	I
CHAPTER 2	Cell Injury, Cell Death, and Adaptations <i>Scott A. Oakes</i>	33
CHAPTER 3	Inflammation and Repair	71
CHAPTER 4	Hemodynamic Disorders, Thromboembolic Disease, and Shock	115
CHAPTER 5	Genetic Disorders	141
CHAPTER 6	Diseases of the Immune System	189
CHAPTER 7	Neoplasia	267
CHAPTER 8	Infectious Diseases <i>Karen M. Frank • Alexander J. McAdam</i>	339
CHAPTER 9	Environmental and Nutritional Diseases	405
CHAPTER 10	Diseases of Infancy and Childhood <i>Aliya N. Husain • Selene C. Koo</i>	453
CHAPTER 11	Blood Vessels <i>Richard N. Mitchell • Marc K. Halushka</i>	485
CHAPTER 12	The Heart <i>Richard N. Mitchell • Andrew J. Connolly</i>	527
CHAPTER 13	Diseases of White Blood Cells, Lymph Nodes, Spleen, and Thymus	583
CHAPTER 14	Red Blood Cell and Bleeding Disorders	635
CHAPTER 15	The Lung <i>Aliya N. Husain</i>	673
CHAPTER 16	Head and Neck <i>Mark W. Lingen • Nicole A. Cipriani</i>	731
CHAPTER 17	The Gastrointestinal Tract	753

CHAPTER 18	Liver and Gallbladder	823
	<i>Ryan M. Gill • Sanjay Kakar</i>	
CHAPTER 19	The Pancreas	881
	<i>Anirban Maitra</i>	
CHAPTER 20	The Kidney	895
	<i>Anthony Chang • Zoltan G. Laszik</i>	
CHAPTER 21	The Lower Urinary Tract and Male Genital System	953
	<i>George Jabboure Netto • Mahul B. Amin</i>	
CHAPTER 22	The Female Genital Tract	985
	<i>Lora Hedrick Ellenson • Edyta C. Pirog</i>	
CHAPTER 23	The Breast	1037
	<i>Susan C. Lester</i>	
CHAPTER 24	The Endocrine System	1065
	<i>Anirban Maitra</i>	
CHAPTER 25	The Skin	1133
	<i>Alexander J. Lazar</i>	
CHAPTER 26	Bones, Joints, and Soft Tissue Tumors	1171
	<i>Andrew Horvai</i>	
CHAPTER 27	Peripheral Nerves and Skeletal Muscles	1217
	<i>Peter Pytel • Douglas C. Anthony</i>	
CHAPTER 28	The Central Nervous System	1241
	<i>Marta Margeta • Arie Perry</i>	
CHAPTER 29	The Eye	1305
	<i>Robert Folberg</i>	