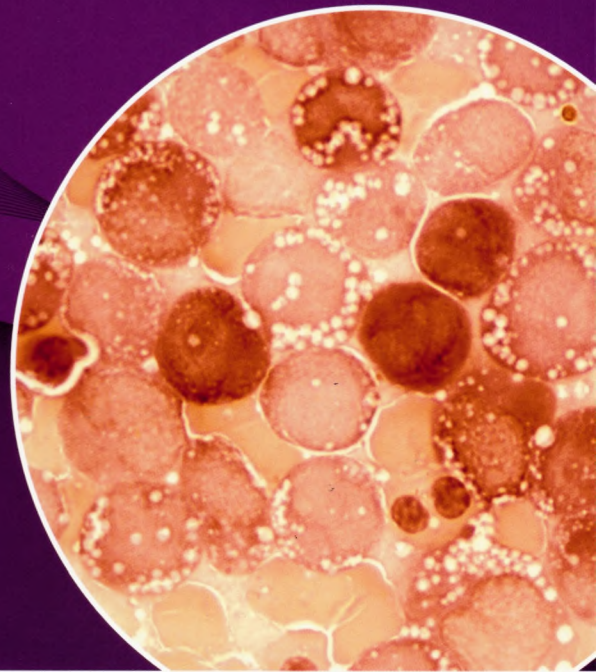
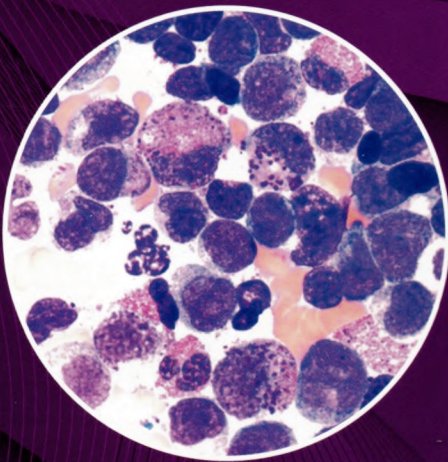
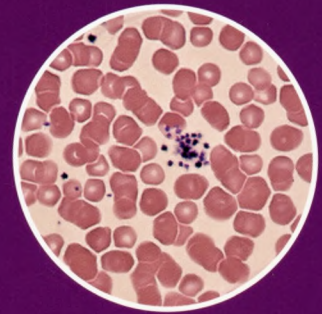


016.13
C 26

CLINICAL HEMATOLOGY ATLAS

Jacqueline H. Carr

SIXTH EDITION



Evolve®

Student Resources on Evolve
Access Code Inside

616.15
C 2.6

SIXTH EDITION

CLINICAL HEMATOLOGY ATLAS

Jacqueline H. Carr, MS MT(ASCP)SH

Laboratory Manager (Retired)
Department of Pathology and Laboratory Medicine
Indiana University Health
Indianapolis, Indiana

772525

Universitatea de Stat de Medicină și Farmacie
„Nicolae Testemițanu”
**BIBLIOTECA
ȘTIINȚIFICĂ MEDICALĂ**

SL5



ELSEVIER

CONTENTS

Section 1 Introduction

- 1 Introduction to Peripheral Blood Film Examination 1

Section 2 Hematopoiesis

- 2 Hematopoiesis 11
- 3 Erythrocyte Maturation 17
- 4 Megakaryocyte Maturation 31
- 5 Neutrophil Maturation 41
- 6 Eosinophil Maturation 55
- 7 Basophil Maturation 65
- 8 Monocyte Maturation 69
- 9 Lymphocyte Maturation 79

Section 3 Erythrocytes

- 10 Variations in Size and Color of Erythrocytes 89
- 11 Variations in Shape and Distribution of Erythrocytes 93
- 12 Inclusions in Erythrocytes 107
- 13 Diseases Affecting Erythrocytes 115

Section 4 Leukocytes

- 14 Nuclear and Cytoplasmic Changes in Leukocytes 131
- 15 Acute Myeloid Leukemia 141
- 16 Precursor Lymphoid Neoplasms 161
- 17 Myeloproliferative Neoplasms 165
- 18 Myelodysplastic Syndromes 175
- 19 Mature Lymphoproliferative Disorders 185
- 20 Morphologic Changes After Myeloid Hematopoietic Growth Factors 195

Section 5 Miscellaneous

- 21 Microorganisms 199
- 22 Miscellaneous Cells 207
- 23 Normal Newborn Peripheral Blood Morphology 219
- 24 Body Fluids 223

Glossary 245

Index 265