

014-3
W 62
Get Full Access and More at

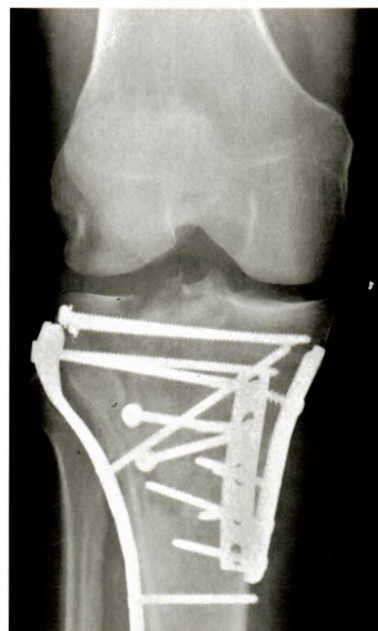
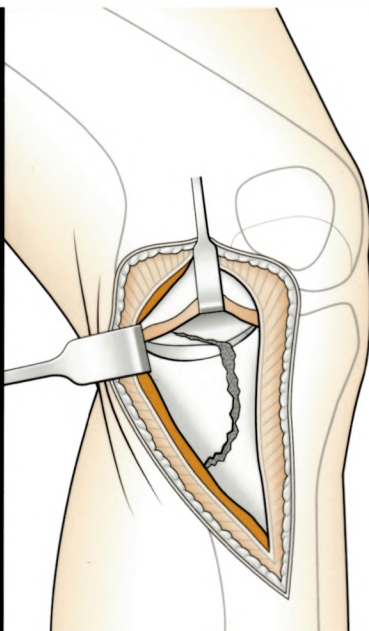
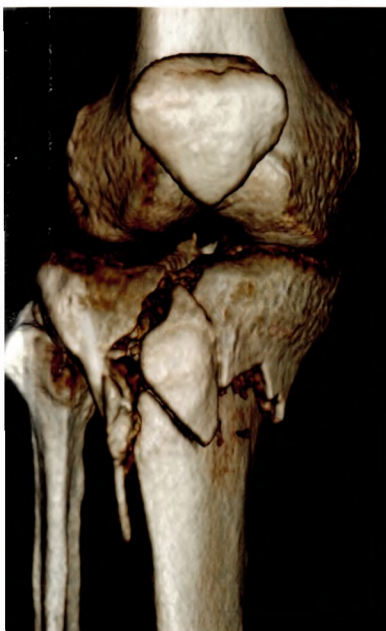
ExpertConsult.com

McRae's **ORTHOPAEDIC TRAUMA**

and Emergency Fracture Management

Third Edition

Timothy O White • Samuel P Mackenzie • Alasdair J Gray



ELSEVIER



614,3
W 63

McRae's

ORTHOPAEDIC TRAUMA

and Emergency Fracture Management

Third Edition

Timothy O White

BMedSci, MBChB, FRCSEd (Tr & Orth), MD

Consultant Orthopaedic Trauma Surgeon,
Royal Infirmary of Edinburgh;
Honorary Senior Lecturer in the Department of
Orthopaedic and Trauma Surgery,
University of Edinburgh

Samuel P Mackenzie

BMedSci, MBChB, MRCSEd

Specialty Trainee in Trauma and Orthopaedics,
Royal Infirmary of Edinburgh;
Honorary Teaching Fellow,
University of Edinburgh

Alasdair J Gray

MBChB, FRCS, FCEM, MD

Consultant in Accident and Emergency
Medicine,
Royal Infirmary of Edinburgh;
College Professor of Emergency Medicine,
University of Edinburgh

Illustrated by Robert Britton

772518



ELSEVIER

Edinburgh London New York Oxford Philadelphia St Louis Sydney Toronto 2016



SL5

Contents

Preface	ix	<i>Hold: implant choice</i>	85
Dedications and acknowledgements	x	<i>Move: activity restriction and weight-bearing</i>	101
Contributors	xi		
Part 1: General Principles	1	6 Musculoskeletal infection and joint aspiration	103
1 Fractures and fracture management	2	Acute arthritis	103
Orthopaedic terminology	2	Cellulitis	105
Assessment of a fracture	12	Necrotizing fasciitis	105
Principles of fracture management	15	Abscesses	106
Bone structure and healing	16	Muscle infection	107
How to present a radiograph	18	Bone infection (osteomyelitis)	107
		Joint aspiration and injection	109
2 Management of the injured patient	21	7 Complications	115
Major trauma	21	Non-union	115
Intravascular fluid replacement in major trauma	25	Infection	117
Decision-making in trauma	26	Malunion	117
Anaesthesia and analgesia	30	Bone defects	118
Trauma in the elderly	35	Heterotopic ossification	119
		Complex regional pain syndrome	120
3 Limb-threatening injuries	40	Pathological fractures	122
Closed soft tissue injuries	40		
Open fractures	41	Part 2 Specific Injuries by Region	127
Compartment syndrome	45	8 Shoulder girdle	128
Crush injuries	49	General principles	128
Nerve injury	50	Clavicle	134
Vascular injury	58	Acromioclavicular joint	139
The mangled limb	60	Sternoclavicular joint	142
Signpost injuries	61	Scapula	144
		Scapulothoracic dissociation	145
4 Closed management of fractures	62	Anterior shoulder (glenohumeral) dislocation	146
Reduce: closed reduction	62	Posterior shoulder dislocation	152
Hold: principles of cast management	64	Inferior shoulder dislocation (luxatio erecta)	155
Backslabs	65	Rotator cuff tears	156
Full casts	73	Calcific tendonitis	157
Limb elevation	76	Frozen shoulder (adhesive capsulitis)	158
Cast aftercare	78		
Orthoses	81	9 Humerus	159
		General principles	159
5 Operative management of fractures	83	Proximal humeral fractures	164
Reduce: closed or open fracture reduction	83	Humeral shaft fractures	173
Hold: construct stability	83		

	Long head of biceps rupture (proximal injury at the shoulder)	179		Distal phalanx: rigger jersey finger	279
	Biceps tendon avulsion (distal injury at the elbow)	180		Distal phalanx: closed tuft fractures	280
10	Elbow	181		Dislocations	280
	General principles	181		Carpometacarpal joint dislocations	280
	Distal humeral fractures	184		Thumb metacarpophalangeal joint instability: ulnar collateral ligament rupture or 'gamekeeper's thumb'	280
	Radial head and neck fractures	194		Metacarpophalangeal joint dislocations	281
	Olecranon fractures	199		Proximal interphalangeal joint dislocations	282
	Elbow dislocation	204		Distal interphalangeal joint dislocations	283
11	Forearm	212		Soft tissue injuries of the hand	284
	General principles	212		Extensor tendon injury	284
	Radial shaft fractures	215		Flexor tendon injury	284
	Ulnar shaft fractures	218		Fingertip injuries	285
	Both-bones fracture of the forearm	224		Trigger finger	287
	Compartment syndrome of the forearm	226		Hand infections	287
12	Wrist and carpus	227		Fingertip infections	287
	General principles	227		Flexor sheath infection	288
	Distal radial fractures	234		Septic arthritis	289
	Distal ulnar fractures	248		14 Spine	290
	Scaphoid fractures	248		General principles	290
	Other carpal fractures	253		Principles of management of major spinal trauma	294
	Carpal instability	254		Major spinal injuries	304
	Carpal tunnel syndrome	259		Atlanto-occipital injuries	304
	Differential diagnoses for acute wrist pain	261		Atlanto-axial fractures and instability	305
13	Hand	263		Subaxial cervical fractures C3-C7	307
	General principles	263		Fractures of the thoracic and lumbar (thoracolumbar) spine	309
	Immobilization of hand injuries	268		Sacral fractures	316
	Metacarpal fractures	271		Spinal cord injuries	316
	Metacarpal head			Minor spinal injuries	317
	Fractures	271		Spinous process fractures	317
	Metacarpal neck fractures	272		Coccyx fractures	318
	Metacarpal shaft fractures	272		Other spinal pathology	318
	Finger metacarpal base			The ambulant patient with back pain	318
	Fractures	275		The ambulant patient with neck pain	321
	Thumb metacarpal base			Lumbar radiculopathy	321
	Fractures	275		Cauda equina syndrome	323
	Phalangeal fractures	277		Spinal infection	324
	Proximal and Intermediate			Spondylolisthesis	324
	Phalanges: extra-articular				
	Fractures	277			
	Proximal and intermediate				
	Phalanges: intra-articular				
	fractures	278			
	Distal phalanx: mallet finger injury	279			

15 Pelvis	326	<i>Midfoot fractures</i>	540
General principles	326	<i>Tarsometatarsal (Lisfranc) injuries</i>	542
Pelvic ring injuries	329	<i>Metatarsal fractures</i>	546
16 Acetabulum	341	<i>Metatarsophalangeal joint and toe injuries</i>	548
General principles	341	<i>Compartment syndrome of the foot</i>	549
Acetabular fractures	342	<i>Foot sprains</i>	551
17 Hip	350	23 Principles of paediatric trauma	553
General principles	350	<i>Trauma in the skeletally immature</i>	553
Hip fractures	352	<i>The unique properties of children's bones</i>	553
Hip dislocation	375	<i>Physeal injuries</i>	553
Femoral head (Pipkin) fractures	378	<i>Types of paediatric fracture</i>	558
Periprosthetic fractures around the hip	379	<i>Interpreting paediatric radiographs</i>	561
Atypical hip fractures	383	<i>Neurovascular complications</i>	561
18 Femur	385	<i>Non-accidental injury</i>	562
General principles	385	<i>The limping child</i>	563
Femoral shaft fractures	388	24 Upper limb paediatric trauma	566
Distal femoral (supracondylar) fractures	410	Shoulder girdle	566
19 Knee	418	Clavicle	566
General principles	418	Scapula	566
Knee dislocation	427	Proximal humeral fractures	566
Isolated knee ligament injuries	430	Glenohumeral dislocation	567
Tibial spine fractures	432	Humeral cysts	568
Meniscal injuries	432	Humeral shaft fractures	568
Quadriceps and patellar tendon ruptures	434	Elbow	568
Patellar fractures	437	<i>Supracondylar fractures of the humerus</i>	569
Patellar dislocation	441	<i>Lateral condylar fractures</i>	575
Non-specific soft tissue knee injury	442	<i>Medial condylar fractures</i>	577
20 Tibia	444	<i>Medial epicondylar fractures</i>	577
General principles	444	<i>Elbow dislocation</i>	578
Tibial plateau fractures	445	<i>Olecranon fractures</i>	578
Tibial shaft fractures	456	<i>Radial head and neck fractures</i>	578
21 Ankle	472	Forearm	579
General principles	472	<i>Monteggia fracture dislocation</i>	579
Ankle fractures	479	<i>Galeazzi fracture dislocation</i>	579
Pilon fractures	506	<i>Diaphyseal fractures of radius and ulna</i>	580
Ankle sprains	514	Wrist	584
Achilles tendon rupture	514	<i>Fractures of the distal radius and ulna</i>	584
Peroneal tendon dislocation	515	Hand and carpus	586
22 Foot	518	Carpus	586
General principles	518	Scaphoid	586
Talar fractures	522	Metacarpals and fingers	586
Subtalar dislocation	530	25 Lower limb paediatric trauma	588
Talar dislocation	531	Pelvis and acetabulum	588
Calcaneal fractures	531	<i>Pelvic fractures</i>	588

<i>Acetabular fractures</i>	588	<i>Patellar fracture</i>	602
Hip	588	<i>Proximal tibial fractures</i>	602
<i>Hip fractures</i>	588	<i>Tibial tuberosity fractures</i>	603
<i>Hip dislocation</i>	591	<i>Tibial diaphyseal fractures</i>	604
<i>Slipped capital femoral epiphysis</i>	591	<i>Toddler's fracture</i>	605
Femur	594	<i>Distal tibial metaphyseal fractures</i>	605
<i>Femoral shaft fractures</i>	594	Ankle	606
Knee	599	<i>Ankle fractures</i>	606
<i>Fractures of the distal femur</i>	599	Foot	609
<i>Patellar dislocation</i>	600		
<i>Tibial spine fracture and anterior cruciate ligament disruption</i>	602	Index	611